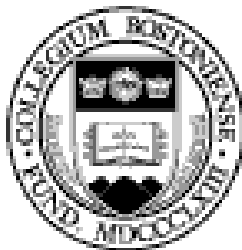


BOSTON COLLEGE FACT BOOK

2002-2003

Containing data from
Fiscal Year 2001-2002,
Academic Year 2001-2002,
and Fall of Academic Year 2002-2003



Current and past issues of the Boston College Fact Book are available
on the Boston College web site at
<http://www.bc.edu/factbook>

Foreword

The *Boston College Fact Book* captures and summarizes much of the important current and historical information about Boston College. The *Fact Book* is intended to serve as a reference for information about the University's faculty, students, alumni, personnel, facilities, and budget. Although the *Fact Book* is generally published annually, this current edition is the first to be published since the 2000-2001 *Fact Book* was released in August 2001.

The 2002-2003 *Boston College Fact Book* reflects year-end data from the 2001-2002 fiscal and academic years. In certain instances, information relating to the fall of 2002 (academic year 2002-2003) is presented. Much of the information contained in the *Fact Book* is cumulative and references annual data for the preceding five or ten year period. Other information is presented in a single year format. Because of the gap in publication of the *Fact Book*, single-year data for the 2000-2001 fiscal and academic years has been preserved in the 2001-2002 *Supplemental Edition*, accessible on the Web at <http://www.bc.edu/factbook>.

We are grateful to the many departments and individuals who provided data for this book - the 30th edition of the *Fact Book*. The majority of the information is extracted from reports produced on a regular basis by the various source offices. Inquiries and comments regarding specific data should be addressed to the responsible office (as noted at the bottom of each item). The *Fact Book* is also available in its entirety at <http://www.bc.edu/factbook>. We welcome your comments and suggestions for additional information that might be included, or improvements in the way information is presented.

James Kreinbring, Editor
Christine Buscemi
Margaret Ryan
February 2003

The Mission of Boston College

Table of Contents

	Page
Foreword	2
The Mission of Boston College	2
A Brief History of Boston College	6
A Boston College Chronology	7
Boston College Profile	11

Administration & Faculty

Board of Trustee Membership 8.30.21..... 05.2/F351.f2.2..... 3.7654..... Co792..... AHANA 14 and Intern.....	14
Boston College Profile 13.2/52..... f.9..... 0.9.48.96.277.34..... m..... Co669..... Freshman Enrollm..t.by Year and Gender, Full-Time..... 19.9.....	14
Trustee Associate Membership	15
The Jesuit Community at Boston College	
39.9.351 f4 0..... 2.50..... C03..... by Type of Previous Institu..on and Genderc 0...4F..... 7	7

	Page
by Country	39
Degrees Conferred:	
Undergraduate and Graduate by Degree and Gender	40
Undergraduate by Degree and Number of Majors	41
Undergraduate by Major	42
Undergraduate by School and Major	43
Graduate by School, Degree, Primary Field, and Gender	44
Undergraduate and Graduate Financial Aid:	
Dollars Awarded	45
Number of Awards	45
Undergraduates Studying Abroad	46
Undergraduate Student Graduation and Retention Rates	47
<i>Senior Survey, Spring 2001:</i>	
Academic Fields of Highest Planned Degree	47
Long-Term Career Plans	47
Postgraduate Degree Aspirations	47
Alumni & Development	
Alumni Association Board of Directors	50
Alumni Awards	50
Boston College Alumni Clubs	50
Geographic Distribution	51
Living Alumni by Primary School and Class	52
Living Alumni by Gender and Class	54
Gifts to the University	55
Individual Donors by Giving Club	55
Alumni Donors by Primary School and Class	56
Physical Plant	
Buildings Related to Boston College Operations	60
Boston College Properties	62
Facility Capacities	63
Dining Facilities	64
Offices	65
Classrooms	65
Summary of Building Use	65
Residence Hall Capacities	66
Finance	
Highlights of Financial Operations	70
Condensed Statement of Financial Position	71
Tuition and Fees	72
Undergraduate Tuition Restated in 1982-84 Dollars	73
	P.7al.PlantAcad...65 Classrooms

	Page
Statistics	79
University Archives	79
Language Laboratory	79
McMullen Museum of Art	80
Information Technology	80
Student Learning and Support Center	80
Statistics	80
Telephone Infrastructure	80
Computer Network Elements	81
Total Successful Page Deliveries by <i>www.bc.edu</i> Web Server	81
Research & Sponsored Projects	
Highlights of Sponsored Activities	84
Summary of Sponsored Project Awards	84
Sponsored Projects, Source and Application of Funding	84
Sponsored Projects by Department	85
Number and Dollar Amount of Sponsored Projects Awards Received	86
Number of Sponsored Project Proposals Submitted	88
Selected Sponsored Project Awards	89
Research Institutes and Centers	90
Athletics	
Intercollegiate Athletic Season Highlights	94
Varsity Sports Records	97
Intramural Sports Participation	97
Intercollegiate	9

A Brief History of Boston College

Boston College was founded by the Society of Jesus in 1863, and is one of twenty-eight Jesuit colleges and universities in the United States. With three teachers and twenty-two students, the school opened its doors on September 5, 1864. At the outset and for more than seven decades of its first century, the college remained an exclusively liberal arts institution with emphasis on the Greek and Latin classics, English and modern languages and with more attention to philosophy than to the physical or social sciences. Religion, of course, had its place in the classroom as well as in the nonacademic life of the college.

Originally located on Harrison Avenue in the South End of Boston, where it shared quarters with the Boston College High School, the College outgrew its urban setting toward the end of its first fifty years. A new location was selected in Chestnut Hill, then almost rural, and four parcels of land were acquired in 1907. A design competition for the development of the campus was won by the firm of Maginnis and Walsh, and ground was broken on June 19, 1909, for the construction of Gasson Hall. It is located on the site of the Lawrence farmhouse, in the center of the original tract of land purchased by Father Gasson, and is built largely of stone taken from the surrounding property.

Later purchases doubled the size of the property, with the addition of the upper campus in 1941, and the lower campus with the acquisition of the Lawrence Basin and adjoining land in 1949. In 1974 Boston College acquired Newton College of the Sacred Heart, a mile-and-a-half from the main campus. With fifteen buildings standing on forty acres, it is now the site of the Boston College Law School and residence halls housing 800 freshmen.

Though incorporated as a university since its beginning, it was not until its second half-century that Boston College began to fill out the dimensions of its charter. The Summer Session was inaugurated in 1924; the Graduate School of Arts and Sciences in 1925; the Law School, 1929; the Evening College, 1929; the Graduate School of Social Work, 1936; the College of Business Administration, 1938. The latter, along with its Graduate School established in 1957, is now known as The Wallace E. Carroll School of Management. The Schools of Nursing and Education were founded in 1947 and 1952, respectively. Weston Observatory, founded in 1928, was accepted as a department of Boston College in 1947, offering courses in geophysics and geology.

The Graduate School of Arts and Sciences began programs at the doctoral level in 1952. Now courses leading to the doctorate are offered by twelve Arts and Sciences departments. The

Schools of Education and Nursing, the Carroll Graduate School of Management, and the Graduate School of Social Work also offer doctoral programs.

In 1927 Boston College conferred one earned bachelor's degree and fifteen master's degrees on women through the Extension Division, the precursor of the Graduate School of Arts and Sciences, the Evening College, and the Summer Session. By 1970 all undergraduate programs had become coeducational. Today women students comprise more than half of the University's enrollment.

In 1996 the Evening College became the College of Advancing Studies, offering a master's degree as well as the bachelor's degree. The university's longest presidency, 24 years, came to an end when Father J. Donald Monan became chancellor and was succeeded in the presidency by Father William P. Leahy.

During the decade of the nineties, the Boston College campus has been changed in significant ways. The University has completed several major construction projects, including the expansion and renovation of Higgins Hall, the home of the Biology and Physics Departments; updating of residence halls on the upper campus and Newton campus; and the construction of a new office building for faculty and administrative units on lower campus. These projects have added 260,000 square feet to Boston College facilities and have resulted in on-campus housing for more than 80% of the undergraduates currently attending Boston College.

In recent years, major advances have also occurred in student selectivity, as well as faculty research and scholarship. For instance, between 1996 and 2002, freshman applications increased from 16,501 to 21,133, and the middle range SAT scores of admitted students increased from 1200-1340 to 1250-1390. During this same period, the dollar amount of sponsored project awards received by the University more than doubled, and the number of research centers and institutes grew from six to twenty-one.

Since 1996, the University's endowment has grown from \$590 million to approximately \$1 billion, the result of successful investment strategies and the *Ever to Excel* campaign, which has raised more than \$400 million in cash and pledges to date.

Source: University Historian and Public Affairs

A Boston College Chronology*

- 1857** Father John McElroy, S.J., purchased property in the South End of Boston for a new college.
- 1863** Gov. John A. Andrews signed the charter of Boston College, April 1. First meeting of the Boston College trustees was held on July 6.
- 1864** Boston College opened on September 5, with Father John Bapst, S.J., as president and Father Robert Fulton, S.J., as dean. Twenty-two students admitted.
- 1877** First Commencement was held. Nine students received A.B. degrees, June 28.
- 1883** *The Stylus*, the College literary magazine, founded.
- 1907** Father Thomas Gasson, S.J., named president; purchased 31 acre Lawrence farm in Chestnut Hill for new campus.
- 1913** Gasson Hall completed. First graduation held at the Heights, June 18. Four classes enrolled in Gasson in September.
- 1918** Conscription and voluntary enlistment for World War I reduced the College enrollment to 125 in October, down from 671 two years earlier.
- 1919** Boston College's won its first major football victory, 5-3 over favored Yale at New Haven. First issue of *The Heights*, student weekly, printed November 17.
- 1923** Baseball team beat Holy Cross 4-1 before 30,000 at Braves Field, June 18.
- 1924** Summer School started.
- 1925** Graduate School of Arts and Sciences started.
- 1928** Bapst library opened, the fourth of the early Maginnis and Walsh buildings. Weston Observatory, the seismological station, founded.
- 1929** Law School opened at 11 Beacon Street, Boston. Evening College started as "Boston College Intown" at 126 Newbury Street, Boston.
- 1935** Greek requirement for the A.B. degree dropped.
- 1936** Graduate School of Social Work opened at Newbury Street.
- 1938** School of Management opened at Newbury Street as the "College of Business Administration."
- 1940** Cotton Bowl vs. Clemson (3-6) first bowl game.
- 1941** Cardinal O'Connell purchased the Liggett estate, the upper campus, and gave it to the College.
- 1946** To accommodate post war enrollment, army surplus barracks became dormitories on the site of present Campion Hall; a larger office/classroom building was erected on the site of McGuinn, and a recreation building on the site of Cushing Hall.
- 1947** Construction begun on the first permanent building since the completion of Bapst in 1928, to house the College of Business Administration (occupied in September 1948). The School of Nursing opened at 126 Newbury Street.
- 1949** College acquired small reservoir (lower campus). Hockey team won national title at Colorado Springs.
- 1951** Lyons Hall was completed in July.
- 1952** The School of Education opened in September in Gasson Hall. Doctoral programs were begun in Economics, Education, and History, the beginning of increased emphasis on graduate education.
- 1954** Law School moved to St. Thomas More Hall on the Chestnut Hill campus.
- 1955** Claver, Loyola, and Xavier Halls opened, first campus residences constructed by BC. The School of Education moved into Campion Hall.
- 1957** Graduate School of Management founded. Alumni Stadium dedicated September 21.
- 1958** Latin no longer required for the A. B. degree. The College of Arts and Sciences Honors Program and the Scholar of the College Program were begun. The original gymnasium, Roberts Center, and the first hockey rink, McHugh Forum, were opened.
- 1959** The Board of Regents, advisory to the trustees and administration, was established.
- 1960** The Nursing School occupied its campus building, Cushing Hall. Three more student residences, named for the early bishops of Boston, Cheverus, Fenwick, and Fitzpatrick, were completed.
- 1961** McElroy Commons opened.
- 1963** The Boston College Centennial Convocation was addressed by President John F. Kennedy on April 20. The Self-Study of the College of Arts and Sciences led to a new core curriculum, a reduction in the course load, election of department chairmen, the establishment of Educational Policy committees, and sabbaticals.
- 1964** Carney Hall opened. Welch, Williams, and Roncalli residences were occupied.
- 1966** Higgins Hall was dedicated in November.
- 1968** The Board of Regents joined the Jesuit trustees to form the Board of Directors, October 8. The Black Talent Program was started, precursor to AHANA Student Programs.

PHOTO

Boston College Profile

Undergraduate Admission (Class of 2006)

Applicants	21,133
Enrollees	
Men	1,150
Women	1,165
Total Freshman Class	2,315

Enrollment (Full- and Part-Time; Fall 2002)

Undergraduate	8,916
Advancing Studies (undergraduate)	774
Graduate & Professional	4,607
Total Enrollment	14,297

Degrees Conferred (Academic Year 2001-02)

Undergraduate	2,214
Advancing Studies (undergraduate)	97
Graduate & Professional	1,488
Total Degrees Conferred	3,799

ADMINISTRATION & FACULTY

PHOTO

Gregory P. Barber, '69

Chairman

Gregory P. Barber & Associates, Inc.

Peter W. Bell, '86

Chairman and Chief Executive Officer

StorageNetworks, Inc.

* **Geoffrey T. Boisi, '69**

Vice Chairman

J. P. Morgan Chase & Company

Daniel S. Hendrickson, S.J.
Department of Philosophy

Officers of the University Fall 2002

President

William P. Leahy, S.J.

Chancellor

J. Donald Monan, S.J.

Executive Vice President

Patrick J. Keating

Academic Vice President and Dean of Faculties

John J. Neuhauser

Vice President for University Mission and Ministry

Joseph A. Appleyard, S.J.

Senior Vice President for University Relations

Mary Lou DeLong

Secretary of the University

Joseph P. Duffy, S.J.

Senior Vice President

James P. McIntyre

Financial Vice President and Treasurer

Peter C. McKenzie

Vice President and Assistant to the President

William B. Neenan, S.J.

Vice President for Student Affairs

Cheryl L. Presley

Vice President for Human Resources

Leo V. Sullivan

Source: Department of Human Resources

Academic Administration Fall 2002

John J. Neuhauser, Academic Vice President
and Dean of Faculties

Michael A. Smyer, Associate Vice President
for Research and Dean of the
Graduate School of Arts and Sciences

Patricia E. A. DeLeeuw, Associate Academic
Vice President for Faculties

Rita R. Owens, Associate Academic Vice President
for Technology

The Woods College of Advancing Studies

James A. Woods, S.J., Dean

The College of Arts and Sciences

Joseph F. Quinn, Dean

J. Joseph Burns, Associate Dean

Clare M. Dunsford, Associate Dean

Gilda A. Morelli, Acting Associate Dean

Mary Daniel O'Keefe, O.P., Associate Dean

Barbara A. Viechnicki, Associate Dean
for Administration

The Graduate School of Arts and Sciences

Michael A. Smyer, Dean

Candace Hertzner, Associate Dean

The Lynch School of Education

Mary M. Brabeck, Dean

Joseph M. O'Keefe, S.J., Associate Dean

Mary Ellen Fulton, Associate Dean
for Finance and Administration

The Law School

John H. Garvey, Dean

Sharon Hamby O'Connor, Associate Dean
for Academic Affairs

Henry E. Clay, Associate Dean for Finance
and Administration

Norah Wylie, Associate Dean for Students
Filippa M. Anzalone, Associate Dean
for Library and Computing Services
Elizabeth Rosselot, Assistant Dean for
Admissions and Financial Aid

The Carroll School of Management

Helen F. Peters, Dean

Robert A. Taggart, Associate Dean (Graduate)

Richard T. Keeley, Associate Dean
(Undergraduate)

James Halpin, Assistant Dean for Academic
Counseling

Christine Lunt, Assistant Dean for External
Relations and Career Services

Eugene McMahon, Assistant Dean for
Administration

Warren Zola, Assistant Dean Graduate
Management Program

The School of Nursing

Barbara H. Munro, Dean

Laurel A. Eisenhauer, Associate Dean
(Graduate)

Loretta P. Higgins, Associate Dean
(Undergraduate)

Susan E. Donelan, Assistant Dean for
Administration

The Graduate School of Social Work

Alberto Godenzi, Dean

Thomas Walsh, Interim Associate Dean

Harry E. Dumay, Assistant Dean for
Administration

Regina O'Grady-LeShane, Assistant Dean
for Academic and Student Services

The Summer Session

James A. Woods, S.J., Dean

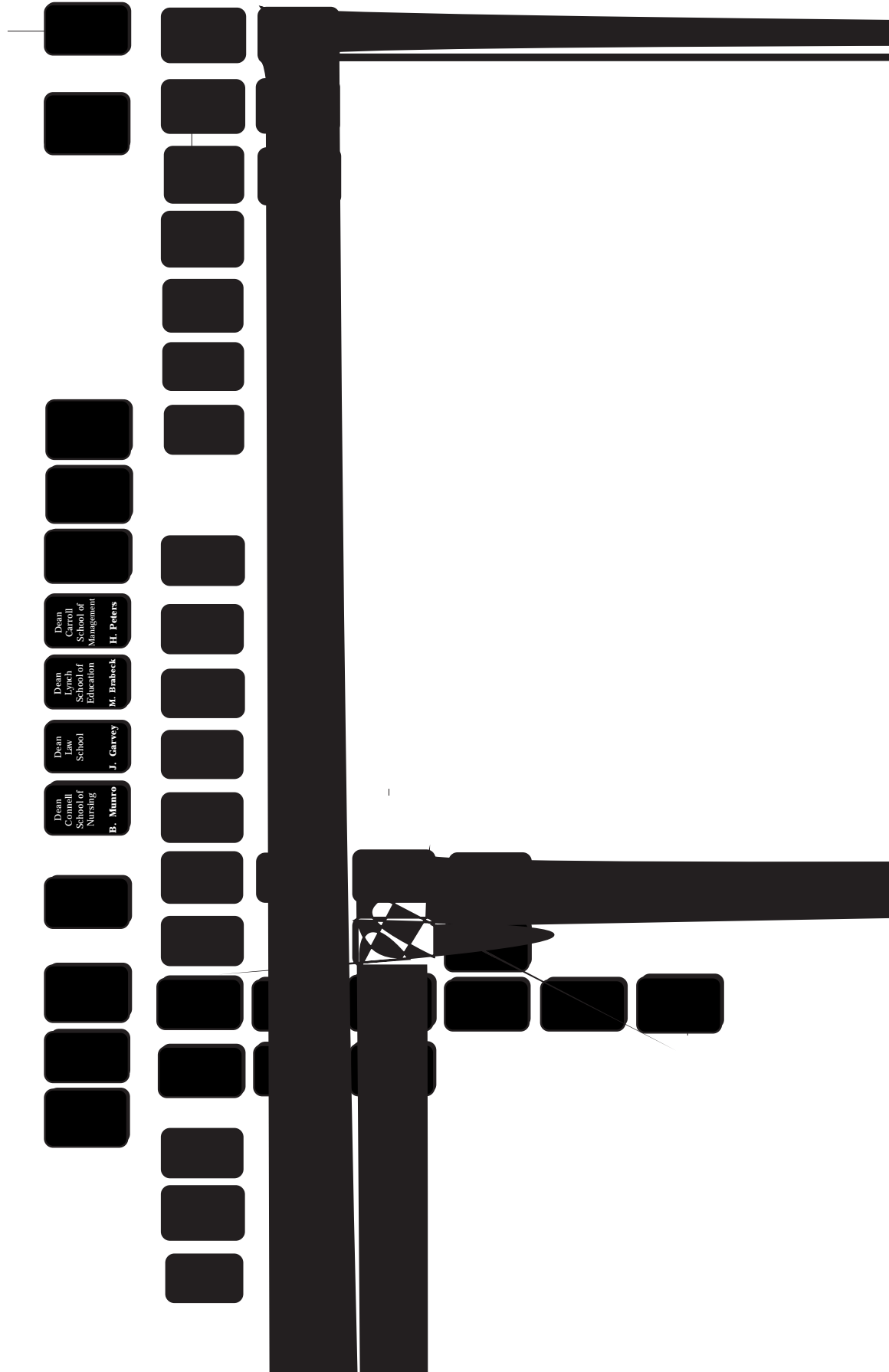
Source: Department of Human Resources

Department Chairpersons Fall 2002

Accounting Greg Trompeter
Biology Marc Muskavitch
Business Law Christine O'Brien
Chemistry David McFadden
Classical Studies Charles F. Ahern, Jr.
Communication Dale Herbeck
Computer Science Robert Muller
Economics Peter Ireland
English Paul Lewis
Finance Alan Marcus
Fine Arts John Michalczyk

Geology and
Geophysics Alan L. Kafka
Germanic Studies Michael Resler
History Peter Weiler
Marketing Victoria Crittenden
Mathematics Gerald E. Keough
Music T. Frank Kennedy, S.J.
Operations &
Strategic Management ... David Murphy
Organizational Studies ... Judith Clair
Philosophy Thomas Hibbs
Physics Kevin Bedell

Political Science Kay Schlozman
Psychology Hiram H. Brownell
Romance Languages
and Literature Franco A. Mormando, S.J.



University Administrators

Fall 2002

Academic Development Center

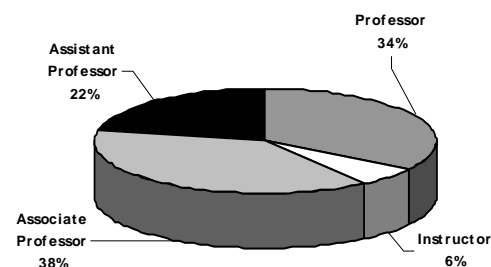
Professional, Administrative, and Support Staff Personnel By Gender, Fall 2002

	Full-Time Positions				Part-Time Positions				Total Positions
	Men	Women	Open	Total	Men	Women	Open	Total	
Professional, Administrative									
Dean of Faculties*	132	206	17	355	14	20	6	40	395
Student Affairs	34	51	4	89	17	21	3	41	130
Athletics	53	27	1	81	17	16	3	36	117
Information Technology	60	32	5	97	0	2	0	2	99
Financial Vice President**	56	42	8	106	1	2	0	3	109
University Relations	19	44	13	76	1	3	1	5	81

Faculty by School and Rank*

2001-2002

School	Professor		Associate		Assistant		Instructor		Total	
	No.	%	No.	%	No.	%	No.	%	No.	%
Arts & Sciences	147	37	145	37	85	22	18	5	395	100
Education	22	38	20	33	17	28	1	1	60	100
Law	21	47	19	42	5	11	-	-	45	100
Management	24	25	35	37	28	29	9	9	96	100
Nursing	7	16	21	48	6	14	10	10	44	100
Social Work	4	25	9	45	4	20	3	3	20	100
Total	225	34	249	38	145	22	41	6	660	100



* Includes all full-time regular faculty members.

Source: Office of the Academic Vice President

Full-Time Equivalent Faculty by School*

2001-2002

School	FTE of Full-Time Faculty		FTE of Part-Time Faculty		FTE of Teaching Fellows & Assistants		Total FTE Faculty	
	No.	%	No.	%	No.	%	No.	%
Arts & Sciences	361.20	60	105.33	57	118.33	80	584.86	62
Education	52.50	9	26.00	14	24.00	16	102.50	11
Law	46.00	7	8.33	5	-	-	54.33	6
Management	91.50	15	16.66	9	-	-	108.16	12
Nursing	39.00	6	4.00	2	6.00	4	49.00	5
Social Work	16.50	3	24.00	13	-	-	40.50	4
Total	606.70	100	173.25	100	148.33	100	939.35	100

* Method of computation: three courses equal one full-time faculty member.

Note: Figures representing full-time faculty do not include the following: full-time academic administrators or directors; teaching fellows; special contracts; part-time academic administrators or staff.

Source: Office of the Academic Vice President

Faculty by School and Gender

2001-2002

School	Women		Men		Total No.	%	
	No.	%	No.	%		Women	Men
Arts & Sciences	111	49	284	68	395	28	72
Education	29	13	31	7	60	48	52
Law	17	9	28	6	45	38	62
Management	24	11	72	16	96	25	75
Nursing	43	20	1	-	44	98	2
Social Work	7	3	13	3	20	35	65
Total	231	100	429	100	660		

Source: Office of the Academic Vice President

Faculty by School and Tenure Status 2001-2002

School	Tenured Faculty		Non-Tenured Faculty		Total	
	No.	%	No.	%	No.	%
Arts & Sciences	292	73	103	27	395	100
Education	42	67	18	33	60	100
Law	40	67	5	33	45	100
Management	59	60	37	40	96	100
Nursing	28	64	16	36	44	100
Social Work	13	65	7	35	20	100
Total	474		186		660	

Source: Office of the Academic Vice President

Faculty by Highest Earned Degree and Rank 2001-2002

Degree	Professor		Associate		Assistant		Instructor		Total	
	No.	%	No.	%	No.	%	No.	%	No.	%
Doctorate	236	100	258	98	127	96	14	50	635	96
Masters	-	-	6	2	5	4	14	50	25	4

Faculty by Rank and Gender 2001-2002

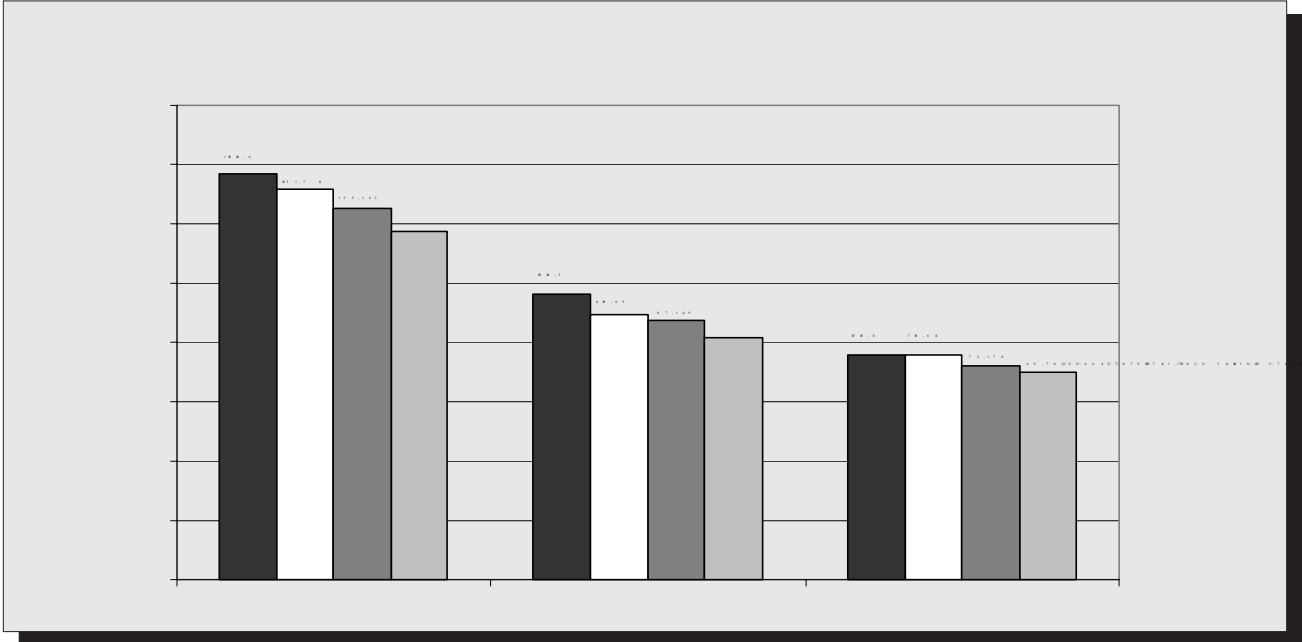
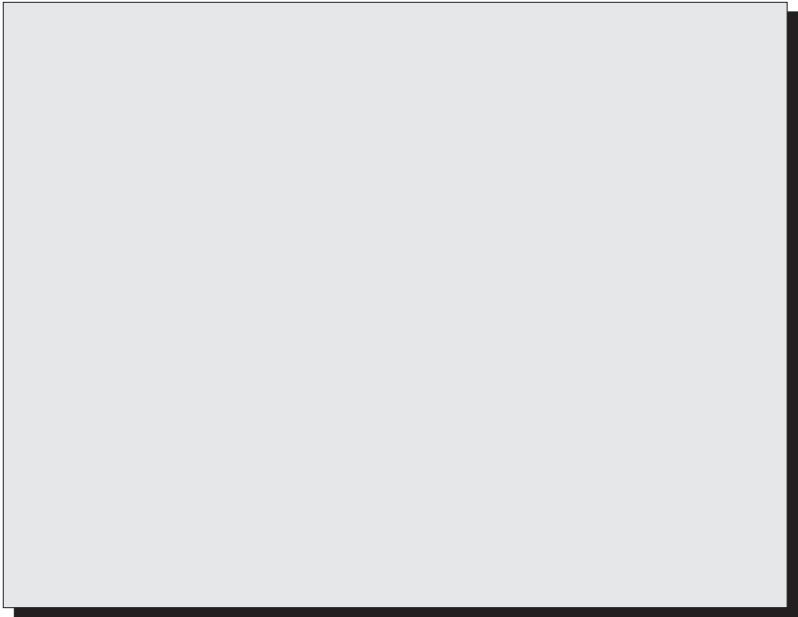
Rank	Women		Men		Total	
	No.	%	No.	%	No.	%
Professor	51	22	174	40	225	34
Associate	89	39	160	37	249	38
Assistant	67	29	78	18	145	22
Instructor	23	10	18	4	41	6
Total	230	100	430	100	660	100

Source: Office of the Academic Vice President

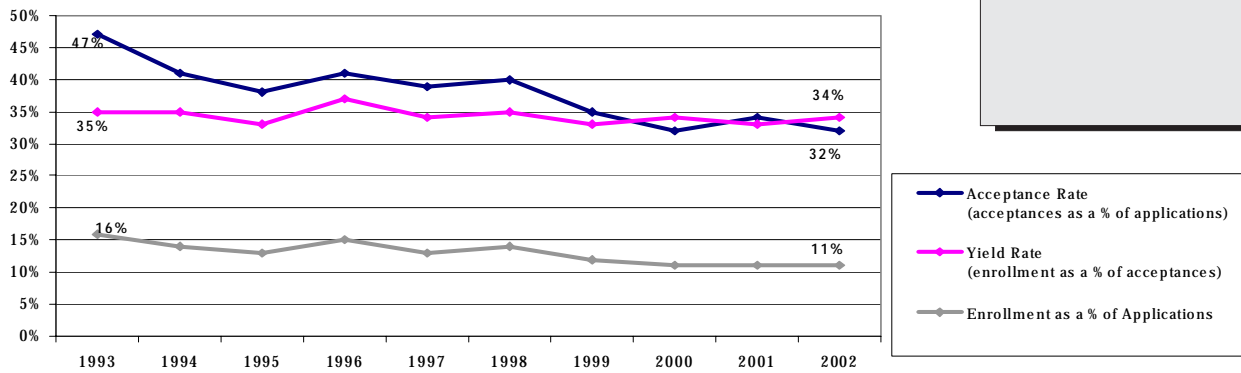
Full-Time Faculty, Teaching Fellows, and Teaching Assistants By School and Department, 2001-2002

	Full-Time Faculty	Teaching Fellows	Teaching Assistants
Arts & Sciences			
Biology	20	-	24
Chemistry	18	-	43
Classics	4	-	-





PHOTO



Fall	Applications	Acceptances	Acceptances as a % of Applications	Total Enrollment	Enrollment as a % of Acceptances	Enrollment as a % of Applications
1993	13,112	6,179	47	2,154	35	16
1994	15,522	6,378	41	2,250	35	14
1995	16,680	6,399	38	2,140	33	13
1996	16,501	6,750	41	2,474	37	15
1997	16,455	6,455	39	2,168	34	13
1998	16,373	6,484	40	2,247	35	14
1999	19,746	6,976	35	2,284	33	12
2000	20,743	6,587	32	2,246	34	11
2001	19,059	6,401	34	2,103	33	11
2002	21,133	6,850	32	2,315	34	11

Note: Freshman enrollment reported above is based on deposits received, on or before the deadline set by the Committee on Admission, from

State	Applications	Acceptances	Enrollment
Alabama	29	10	2

Top Cross Application Competitor Schools of Enrolling Freshmen Class of 2004

Top 12 Colleges and Universities

Undergraduate Transfer Student Applications, Acceptances, and Enrollment Full-Time

	Acceptances as a % of	Total	Enrollment as a % of	Enrollment as a % of
--	--------------------------	-------	-------------------------	-------------------------

Undergraduate Transfer Student Enrollment By Type of Previous Institution and Gender

Fall*	2-Year Public	2-Year Private	4-Year Public	4-Year Private	Total	Men	Women	Total
1993	37	12	72	150	271	122	149	271
1994	44	8	50	120	222	88	134	222
1995	31	6	58	121	216	91	125	216
1996	11	1	43	58	113	42	71	113
1997	22	5	66	154	247	112	135	247
1998	17	8	62	138	225	100	125	225
1999	24	4	59	161	248	95	153	248
2000	10	-	61	71	142	63	79	142
2001	9	2	45	76	132	59	73	132
2002	3	1	24	43	71	32	39	71

* Transfer enrollment typically increases 75-125 students second semester.

Source: Office of Undergraduate Admission

Student Credit Hours

By School*

School	1997-98	1998-99	1999-00	2000-01	2001-02
Undergraduate					
Arts & Sciences	166,945	166,929	173,869	171,305	173,114
Education	24,436	24,557	24,982	23,885	23,654
Management	67,173	67,449	66,569	64,572	63,241
Nursing	7,351	7,146	6,928	6,316	6,751
College of Advancing Studies	18,539	14,514	13,970	13,725	13,543
Total Undergraduate	281,931	280,595	286,318	279,803	280,303
Graduate & Professional					
Graduate Arts & Sciences**	9,343	9,117	9,072	8,913	9,118
Graduate Education**	12,938	14,024	14,360	12,957	11,630
Graduate Management	13,477	13,747	13,311	14,334	14,405
Graduate Nursing**	1,964	2,313	2,828	2,787	2,674
Graduate Social Work	17,081	15,203	14,409	13,178	12,590
Graduate Advancing Studies***	1,983	2,285	2,071	1,707	1,582
Law	23,762	23,502	23,609	23,016	23,489
Total Graduate & Professional	80,548	80,191	79,660	76,892	75,488
Total	362,479	360,786	365,978	356,695	355,791

* Most one semester courses at Boston College carry a value of three credit hours. The figures shown are the sum of fall and spring semester enrollments for each academic year. Summer enrollment is excluded.

** In 1994, the Graduate Schools of Education and Nursing separated from the Graduate School of Arts and Sciences.

80,(Full-TimeF1 1173,0D 0.0212TotalPart-TimeF1 114.0D 0.0212 T32Total)Tj 9 0 0-47m 08 TD 0.0134 Tc50.102ol

TotalWo

Undergraduate, Graduate, and Professional Enrollment, Fall 1998 through 2002 By School, Gender, and Full- and Part-Time

	Undergraduate Day Schools						Graduate & Professional							Univ.	
	A&S	Mgt.	Ed.	Nurs.	Total	Adv.St.	GA&S	GEd.	GNurs.	GMgt.	GSSW	Law	Adv.St.	Total	Total
Fall 1998															
Full-Time	5,577	2,288	810	245	8,920	262	344	464	71	241	362	825	11	2,318	11,500
Part-Time	-	-	-	5	5	669	772	572	84	734	150	-	210	2,522	3,196
Men	2,682	1,400	118	9	4,209	451	544	262	8	660	73	395	84	2,206	6,686
Women	2,895	888	692	241	4,716	480	572	774	147	315	439	430	137	2,814	8,010
Total	5,577	2,288	810	250	8,925	931	1,116	1,036	155	975	512	825	221	4,840	14,696
Fall 1999															
Full-Time	5,853	2,271	828	236	9,189	241	322	469	95	219	346	829	13	2,293	11,722
Part-Time	-	-	-	2	2	595	678	587	66	708	138	-	193	2,370	2,967
Men	2,823	1,386	123	7	4,339	411	525	264	9	622	71	404	77	1,972	6,722
Women	3,030	885	705	231	4,851	425	475	792	152	305	413	425	129	2,691	7,967
Total	5,853	2,271	828	238	9,190	836	1,000	1,056	161	927	484	829	206	4,663	14,689
Fall 2000															
Full-Time	5,741	2,187	785	216	8,929	262	295	417	86	244	307	805	9	2,163	11,354
Part-Time	-	-	-	1	1	606	732	611	79	712	160	-	164	2,458	3,065
Men	2,766	1,394	107	5	4,272	461	526	244	7	635	66	392	76	1,946	6,679
Women	2,975	793	678	212	4,658	407	501	784	158	321	401	413	97	2,675	7,740
Total	5,741	2,187	785	217	8,930	868	1,027	1,028	165	956	467	805	173	4,621	14,419
Fall 2001															
Full-Time	5,850	2,148	772	230	9,000	260	326	325	83	281	300	813	4	2,132	11,392
Part-Time	-	-	-	-	-	537	689	618	68	692	143	1	167	2,378	2,915
Men	2,783	1,343	129	5	4,260	406	518	220	6	653	67	382	78	1,924	6,590
Women	3,067	805	643	225	4,740	391	497	723	145	320	376	432	93	2,586	7,717
Total	5,850	2,148	772	230	9,000	797	1,015	943	151	973	443	814	171	4,510	14,307
Fall 2002															
Full-Time	5,895	2,045	756	220	8,916	248	324	372	98	273	297	806	10	2,180	11,344
Part-Time	-	-	-	-	-	526	712	634	72	700	148	-	161	2,427	2,953
Men	2,889	1,264	126	6	4,285	401	519	235	5	643	64	367	72	1,905	6,591
Women	3,006	781	630	214	4,631	373	517	771	465	330	381	439	99	2,702	7,706
Total	5,895	2,045	756	220	8,916	774	1,036	1,006	170	973	445	806	171	4,607	14,297

Source: Student Services

AHANA and International Student Enrollment, Fall 2000, 2001, & 2002*

Undergraduate Day Schools	Men			Women			Total			% of Undergraduate Day School Students		
	2000	2001	2002	2000	2001	2002	2000	2001	2002	2000	2001	2002
Black or African-American	200	202	224	225	221	223	425	423	447	4.8%	4.7%	5.1%
Native American	11	10	8	26	29	24	37	39	32	0.4%	0.4%	0.4%
Asian	333	356	364	399	404	411	732	760	775	8.2%	8.4%	8.9%
Hispanic	187	189	205	304	312	335	491	501	540	5.5%	5.6%	6.2%
Other/Not reported	19	34	117	25	40	98	44	74	215	0.5%	0.8%	-
Subtotal Undergraduate Day Schools	750	791	801	979	1,006	993	1,729	1,797	1,794	19.4%	20.0%	20.6%
International	124	105	83	84	81	56	208	186	139	2.3%	2.0%	1.6%
Total Undergrad Day	874	896	884	1,063	1,087	1,049	1,937	1,983	1,933	21.7%	22.03%	22.18%

* Note that 2002 AHANA percentages are of students who reported their race/ethnicity identification. International students include nonresident aliens of all racial and ethnic groups, including caucasian.

Source: Student Services

Full-Time Equivalent Enrollment*

By School, Fall 1993 through 2002

	1993	1994	1995	1996	1997	1998	1999	2000	2001	2002
Undergraduate										
Arts & Sciences	5,521	5,699	5,561	5,541	5,589	5,577	5,853	5,741	5,850	5,895
Education	695	701	698	772	806	810	828	785	772	756
Management	2,172	2,270	2,269	2,339	2,276	2,288	2,271	2,187	2,148	2,045
Nursing	416	408	367	305	250	247	237	216	230	220
Total Day Students	8,804	9,078	8,895	8,957	8,921	8,922	9,189	8,929	9,000	8,916
College of Advancing Studies***	688	682	633	624	531	485	439	464	440	423
Total Undergraduate	9,492	9,760	9,528	9,581	9,452	9,407	9,628	9,393	9,440	9,339
Graduate and Professional										
Graduate Arts & Sciences**	1,288	599	609	605	592	601	548	539	553	561
Graduate Education**	-	494	600	601	600	655	665	621	532	583
Graduate Management	378	408	459	455	464	486	455	481	511	506
Graduate Nursing**	-	102	90	68	87	99	117	112	106	122
Graduate Social Work	368	398	456	478	463	412	392	360	348	346
Law	829	830	819	803	826	825	829	805	813	806
Graduate Advancing Studies***	-	-	-	49	68	81	77	64	60	64
Total Graduate & Professional	2,863	2,831	3,033	3,059	3,100	3,159	3,083	2,982	2,923	2,988
Total University	12,355	12,591	12,561	12,640	12,552	12,566	12,711	12,375	12,363	12,327

Geographic Distribution of Undergraduate Students By State

State	1990	1995	2000	2001	2002	State	1990	1995	2000	2001	2002
Alabama	11	13	10	14	11	Nebraska	30	22	22	16	17
Alaska	0	8	4	1	2	Nevada	7	11	3	1	4
Arizona	18	25	29	33	37	New Hampshire	172	165	184	176	162
Arkansas	7	3	4	1	1	New Jersey	672	858	941	932	938
California	184	408	380	410	403	New Mexico	2	5	12	9	8
Colorado	45	43	57	61	65	New York	1,039	1,321	1,372	1,365	1,425
Connecticut	728	881	765	769	752	North Carolina	22	20	26	36	31
D. C.	28	20	29	27	25	North Dakota	2	1	1	1	2
Delaware	23	18	22	19	20	Ohio	132	127	125	138	144
Florida	232	250	303	267	276	Oklahoma	15	13	13	17	14
Georgia	35	46	53	56	52	Oregon	8	20	20	21	27
Guam	0	7	4	3	1	Pennsylvania	308	325	309	305	294
Hawaii	36	41	34	32	28	Puerto Rico	70	48	47	41	42
Idaho	3	4	4	7	6	Rhode Island	260	214	184	181	183
Illinois	150	184	248	249	226	South Carolina	11	6	5	7	4
Indiana	25	21	29	29	27	South Dakota	1	1	1	1	1
Iowa	8	11	17	19	17	Tennessee	16	9	15	13	13
Kansas	14	12	28	26	25	Texas	122	110	131	136	134
Kentucky	11	5	15	17	16	Utah	4	10	4	6	8
Louisiana	38	15	22	27	24	Vermont	47	49	52	49	49
Maine	128	87	108	118	111	Virgin Islands	6	5	1	2	3
Maryland	184	149	255	264	243	Virginia	68	83	76	75	82
Massachusetts	3,135	2,612	2,401	2,453	2,435	Washington	20	42	63	51	52
Michigan	82	67	71	79	76	West Virginia	9	5	2	4	3
Minnesota	77	71	110	124	128	Wisconsin	53	56	50	55	55
Mississippi	4	3	2	4	3	Wyoming	2	1	1	2	1
Missouri	49	50	54	60	61	International	227	314	208	187	139
Montana	6	1	4	4	10	Total	8,586	8,896	8,930	9,000	8,916

Source: Student Services

Undergraduate Majors*

By School

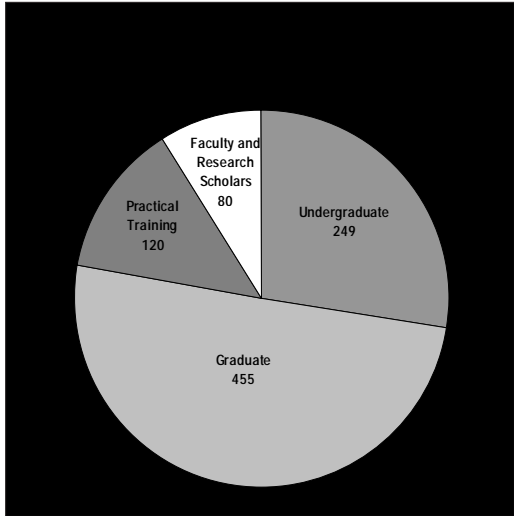
	1993	1994	1995	1996	1997	1998	1999	2000	2001	2002
Arts & Sciences										
ArtHistory	38	43	38	37	38	36	34	32	45	42
Biochemistry	94	108	111	115	117	97	84	83	82	95
Biology	618	671	752	734	665	543	539	481	443	465
Chemistry	94	90	100	89	84	90	94	84	89	102
Classics	17	20	20	20	24	19	15	11	21	17
Communication	480	533	522	499	542	624	734	865	945	963
Computer Science	77	82	97	118	133	181	202	200	189	139
Economics	332	345	356	364	404	430	402	382	374	398
English	955	925	927	935	931	868	906	863	845	770
Film Studies	-	-	-	-	-	-	-	10	32	46
Geology/Geophysics	55	87	82	80	736	66	58	52	42	30
German	14	13	9	6	148	8	11	10	3	7
History	400	398	411	379	392	410	431	451	465	530
Independent	17	12	4	2	1	3	2	5	3	1
International Studies	-	-	-	40	67	64	56	45	31	32
Mathematics	166	178	176	190	168	123	148	135	134	194
Music	26	26	21	19	23	26	23	22	29	32
Philosophy	181	182	198	178	158	166	193	211	230	261
Physics	33	29	28	33	18	29	33	36	34	46
Political Science	773	781	747	700	671	618	649	626	646	669
Psychology	650	715	743	736	694	703	764	684	660	617

Undergraduate Majors with Largest Ten-Year Increase By Major

	Number of Majors		Percent Increase
	1993	2002	
Theology (A&S)	20	137	585%
Film Studies (A&S) ¹	-	46	360%
Theater Arts (A&S)	35	91	160%
Information Systems (CSOM)	53	128	142%
Communication (A&S)	480	963	101%
Computer Science (A&S)	77	139	81%
Studio Art (A&S)	23	41	78%
Accounting/Info Tech (CSOM) ²			

**International Student and Scholar Statistics
By Gender and Program, 2001 - 2002**

Program	Men	Women	Total
Undergraduate	130	119	249
Graduate	265	190	455
Practical Training*	61	59	120
Faculty and Research Scholars	52	28	80
Total			



Lebanon

1

5

6

Undergraduate and Graduate Degrees Conferred*

By Degree and Gender

	1998-99			1999-00			2000-01			2001-2002		
	Men	Women	Total	Men	Women	Total	Men	Women	Total	Men	Women	Total
Undergraduate												
Arts & Sciences												
A.B.	487	527	1,014	583	626	1,209	594	652	1,246	538	690	1,228
B.S.	73	105	178	96	75	171	80	80	160	76	81	157
Total Arts & Sciences	560	632	1,192	679	701	1,380	674	732	1,406	614	771	1,385
Education - A.B.	28	168	196	26	196	222	20	184	204	27	171	198
Management - B.S.	352	232	584	381	276	657	376	206	582	352	215	567
Nursing - B.S.	3	59	62	2	58	60	1	46	47	2	62	64
Subtotal Undergraduate Day Degrees Conferred	943	1,091	2,034	1,088	1,231	2,319	1,071	1,168	2,239	995	1,219	2,214
Advancing Studies - A.B.	39	71	110	43	54	97	47	50	97	56	41	97
Total Undergraduate Degrees Conferred	982	1,162	2,144	1,131	1,285	2,416	1,118	1,218	2,336	1,051	1,260	2,311
Graduate												
Ph.D.	51	65	116	53	63	116	40	69	109	55	65	120
M.A.	80	183	263	65	173	238	93	201	294	94	168	262
M.S.	107	96	203	108	115	223	93	112	205	97	85	182
M.Ed.	43	149	192	39	191	230	52	177	229	21	173	194
M.A.T.	-	5	5	2	1	3	1	4	5	1	3	4
M.S.W.	16	184	200	27	156	183	27	143	170	20	132	152
M.S.T.	-	5	5	3	2	5	1	1	2	-	3	3
M.B.A.	105	58	163	178	90	268	155	99	254	193	97	290
C.A.E.S.	1	6	7	2	10	12	3	9	12	-	13	13
Total Graduate Degrees Conferred	403	751	1,154	477	801	1,278	465	815	1,280	481	739	1,220
Professional												
J.D.	136	129	265	127	173	300	130	132	262	150	118	268
Total Graduate and Professional Degrees Conferred	539	880	1,419	604	974	1,578	595	947	1,542	631	857	1,488
Total Degrees Conferred	1,521	2,042	3,563	1,735	2,259	3,994	1,713	2,165	3,878	1,682	2,117	3,799

* August, December, and May graduations combined.

** Beginning in 1997-98, Boston College changed the titles of the doctoral degrees in social work and education to doctor of philosophy.

Degrees in these fields are included in the Ph.D. counts above.

Source: Student Services

Undergraduate Degrees Conferred*
By Degree and Number of Majors

	1997-98	1998-99	1999-00	2000-01	2001-02
Arts and Sciences					
A.B.					
Single Major	954	832	971	1,061	1,032
Double Major	216	179	237	184	192
Triple Major	-	-	1	1	4
	1,170	1,011	1,209	1,246	1,228
B.S.					
Single Major	180	167	149	149	142
Double Major	15	11	22	11	15
Triple Major	-	-	-	-	-

Undergraduate Degrees Conferred By Major*

	1997-98	1998-99	1999-00	2000-01	2001-02
Accounting	127	149	103	77	66
Art History	7	15	14	7	10
Biochemistry	28	36	25	15	21
Biology	132	119	96	109	88
Chemistry	13	17	24	18	18
Child in Society	-	2	4	4	5
Classics	5	3	4	1	4
Communication	156	141	180	215	227
Computer Science	39	32	60	54	58
Early Childhood Education	12	21	12	11	13
Economics	118	109	170	133	147
Elementary Education	56	43	49	47	64
Elementary Education & Moderate Special Needs	43	30	42	30	7
English	223	209	203	215	211
Environmental Geosciences	13	16	9	10	19
Film Studies	-	-	-	1	7
Finance	245	212	259	257	208
French	9	10	11	8	11
Geology	7	7	6	-	-
Geophysics	-	-	2	2	2
Geology/Geophysics	-	1	3	1	1
German	3	2	5	3	-

Undergraduate Degrees Conferred By School and Major*

	1999-00				2000-01				2001-02			
	Total				Total				Total			
Accounting	-	-	103	103	-	-	77	77	-	-	66	66
Art History	14	-	-	14	7	-	-	7	10	-	-	10
Biochemistry	-	25	-	25	-	15	-	15	-	21	-	21
Biology	-	96	-	96	-	109	-	109	-	88	-	88
Chemistry	-	24	-	24	-	18	-	18	-	18	-	18
Child in Society	-	-	4	4	-	-	4	4	-	-	5	5
Classics	4	-	-	4	1	-	-	1	4	-	-	4
Communication	180	-	-	180	215	-	-	215	227	-	-	227
Computer Science	47	-	13	60	47	-	7	54	40	-	18	58
Early Childhood Education	-	-	12	12	-	-	11	11	-	-	13	13
Economics	137	-	33	170	111	-	22	133	119	-	28	147
Elementary Education	-	-	49	49	-	-	47	47	-	-	64	64
Elementary Education & Moderate Special Needs	-	-	42	42	-	-	30	30	-	-	7	7
English	203	-	-	203	215	-	-	215	211	-	-	211
Environmental Geosciences	-	9	-	9	-	10	-	10	-	19	-	19
Film Studies	-	-	-	-	1	-	-	1	7	-	-	7
Finance	-	-	259	259	-	-	257	257	-	-	208	208
French	11	-	-	11	8	-	-	8	11	-	-	11
Geology	-	6	-	6	-	-	-	0	-	-	-	0
Geophysics	-	3	-	3	-	2	-	2	-	2	-	2
Geology/Geophysics	-	2	-	2	-	1	-	1	-	1	-	1
German	5	-	-	5	3	-	-	3	-	-	-	0
Hispanic Studies	13	-	-	13	8	-	-	8	6	-	-	6
History	115	-	-	115	119	-	-	119	125	-	-	125
Human Development	-	-	66	66	-	-	85	85	-	-	79	79
Independent	3	-	-	3	2	-	-	2	-	1	-	1
Information Systems	-	-	22	22	-	-	27	27	-	-	43	43
International Studies	23	-	-	23	28	-	-	28	14	-	-	14
Italian	-	-	-	-	1	-	-	1	-	-	-	0
Linguistics	1	-	-	1	1	-	-	1	1	-	-	1
Management	-	-	25	25	-	-	17	17	-	-	18	18
Marketing	-	-	167	167	-	-	147	147	-	-	160	160
Mathematics	27	-	-	27	25	-	-	25	22	-	-	22
Mathematic/Computer Science	-	-	1	1	-	-	-	0	-	-	3	3
Music	6	-	-	6	4	-	-	4	5	-	-	5
Nursing	-	-	60	60	-	-	47	47	-	-	64	64
Operations Management	-	-	15	15	-	-	19	19	-	-	14	14
Organizational Studies/Human Resource Management	-	-	20	20	-	-	9	9	-	-	12	12
Philosophy	40	-	-	40	42	-	-	42	35	-	-	35
Physics	-	6	-	6	-	5	-	5	-	7	-	7
Political Science	123	-	-	123	134	-	-	134	130	-	-	130
Psychology	151	-	-	151	146	-	-	146	155	-	-	155
Russian	1	-	-	1	1	-	-	1	1	-	-	1
Secondary Education	-	-	40	40	-	-	22	22	-	-	24	24
Severe Special Needs	-	-	8	8	-	-	5	5	-	-	3	3
Slavic Studies	1	-	-	1	-	-	-	0	-	-	-	0
Sociology	64	-	-	64	89	-	-	89	53	-	-	53
Studio Art	6	-	-	6	11	-	-	11	9	-	-	9
Theatre	17	-	-	17	16	-	-	16	21	-	-	21
Theology	17	-	-	17	11	-	-	11	22	-	-	22
Total**	1											

Number of Awards

	1997-98	1998-99	1999-00	2000-01	2001-02
Type of Aid - Undergraduate					
University Scholarships and Grants ¹	3,913	3,902	3,922	3,842	3,893
State Scholarships ²	902	894	937	947	1,010
Pell Grants ³	1,143	1,104	1,068	1,014	1,030
Supplemental Educational Opportunity Grants	1,143	1,085	1,121	1,000	1,003
Work-Study	3,135	3,091	3,145	2,894	2,825
Perkins Loans ⁴	1,853	1,701	1,716	1,383	1,551
Undergraduate Total⁵	12,089	11,777	11,909	11,080	12,901
Type of Aid - Graduate					
Work-Study	534	658	830	696	694
Perkins Loans ⁴	692	652	726	757	895
Total Undergraduate and Graduate⁵	13,315	13,087	13,465	12,533	12,901

¹This statistic includes estimated regular university scholarships and grants (through the operating budget), faculty kin tuition remission, athletic grants, Jesuit Reduction, Alumni Association Scholarships, and endowed monies for scholarships.

²State scholarship funds to students from Massachusetts, Vermont, Connecticut, Pennsylvania, Rhode Island, Maine, New Hampshire; Gilbert Grants; and Herter Scholarships.

³Pell Grant eligibility is determined directly by the federal government.

⁴These loan funds (formerly called "National Direct Student Loans") are obtained by federal government contributions, Boston College contributions, and collections of previous loans awarded.

⁵This is a duplicated total since some students receive more than one type of aid.

***Important Note: The above data do not include Boston College student assistance for graduate and professional students (approximately \$17.84 million in tuition remission, grants, or scholarships and \$13.35 million in stipends during 2001-2002) administered by the various schools and departments. Also excluded are the Nursing Loan Program (\$164,100 during 2001-2002), a variety of grants and scholarships from fraternal organizations and clubs (\$4,992,877 during 2001-2002), and loans processed by Student Financial Services (\$77,030,407 during 2001-2002) for undergraduate students, graduate students, or their parents.**

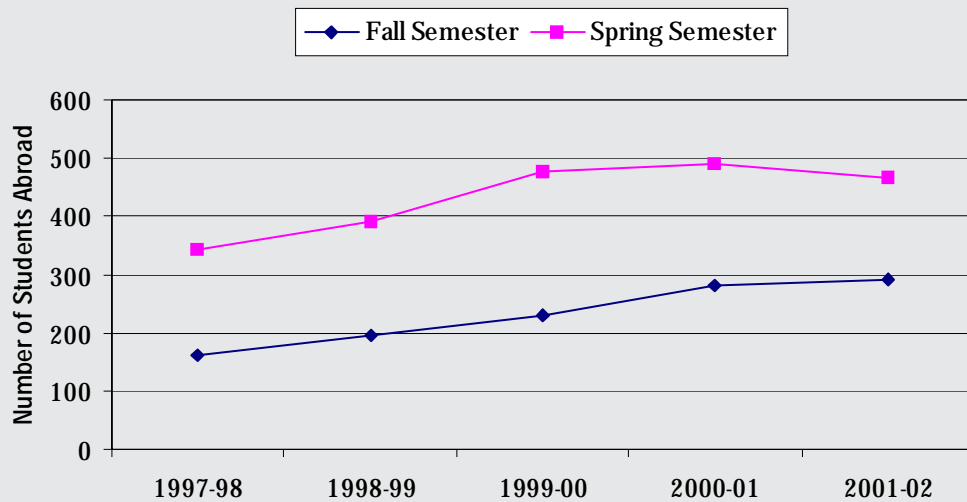
Source: Off Reduct(-2002), and uu2al t(8) \$17864b.d aesj/F3 0 11T002), anuring 2000 T-c0.2097 Tw[4, argraduate Total)Tjuate

Undergraduates Studying Abroad

	Fall Semester			Spring Semester			Annual Average		
	University Programs	External Programs	Total All Programs	University Programs	External Programs	Total All Programs	University Programs	External Programs	Total All Programs
1997-1998	117	45	162	185	158	343	151	102	253
1998-1999	156	41	197	276	115	391	216	78	294
1999-2000	196	35	231	348	127	475	272	81	353
2000-2001	230	50	280	347	144	491	289	97	386
2001-2002	224	66	290	302	166	468	263	116	379

Source: Offices of Student Services

Undergraduates Studying Abroad



Undergraduate Student Graduation and Retention Rates Freshman Matriculants in Fall 1995

Rating at Time of Admission	Number of Fall Matriculants	Transfers Out in Good Standing		Number of Graduates within Twelve Semesters		Retention Rate*
		Number	Percent	Number	Percent	
Top 5%	154	6	4%	139	90%	94%
Next 20%	739	45	6%	648	88%	94%
Remaining 75%	1,232	43	3%	1,059	86%	89%
Total	2,125	94	4%	1,846	87%	91%

* "Retention Rate" is the "graduation rate" plus the "transfer out rate" of students to another college.

Source: Office of Enrollment Management Research

Long-Term Career Plans Class of 2001

Career Field	Rank	Percent
Law	1	12.7%
All Education	2	12.5%
Business owner, proprietor, entrepreneur	3	10.7%
Finance	4	7.8%
Medical, health care (including physician)	5	7.5%
Advertising, public relations	6	5.9%
Arts/entertainment	7	3.9%
Management	8	2.8%
Social science or services	9	2.8%
Government, politics, public policy	108(1 Tw	(Undergra.26Rch

ALUMNI & DEVELOPMENT

PHOTO

Boston College Alumni Clubs

Arizona

Phoenix

California

Los Angeles

Northern California

Orange County

San Diego

Colorado

Denver

Connecticut

Fairfield

Hartford

District of Columbia

Washington

England

London

Florida

Miami

Naples

Orlando

Palm Beach

Sarasota

Tampa Bay

Greece

Athens

Illinois

Chicago

Indiana

Indianapolis

Maine

Portland

Maryland

Baltimore

Massachusetts

Boston

Cape Cod

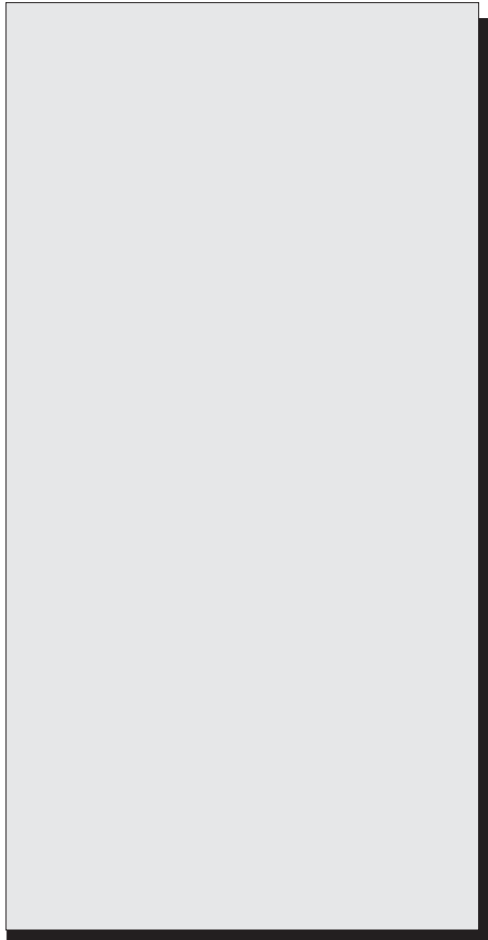
Western Massachusetts

Worcester

Minnesota

Minneapolis

Missouri



Living Alumni By Primary School and Class, Fall 2002

Class	A&S	Ed.	Mgt.	Nursing	Adv. Studies	Newton College	Grad. A&S	Grad. Mgt.	Grad** Ed.	Grad** Nursing	Grad Adv. Studies	Social Work	Law	Weston Theo.	Hon. Dgrs.	EX* Alum	Total
1920	1	-	-	-	-	-	-	-	-	-	-	-	-	-	-	-	1
1921	1	-	-	-	-	-	-	-	-	-	-	-	-	-	-	-	1
1922	-	-	-	-	-	-	-	-	-	-	-	-	-	-	-	-	0
1923	-	-	-	-	-	-	-	-	-	-	-	-	-	-	-	2	2
1924	1	-	-	-	-	-	-	-	-	-	-	-	-	-	-	-	1
1925	1	-	-	-	-	-	-	-	-	-	-	-	-	-	-	-	1
1926	1	-	-	-	-	-	-	-	-	-	-	-	-	2	-	1	4
1927	3	-	-	-	-	-	3	-	-	-	-	-	-	3	-	-	9
1928	7	-	-	-	-	-	-	-	-	-	-	-	-	2	-	1	10
1929	8	-	-	-	-	-	1	-	-	-	-	-	-	-	-	4	13
1930	10	-	-	-	-	-	5	-	-	-	-	-	-	1	-	4	20
1931	18	-	-	-	-	-	2	-	-	-	-	-	-	1	-	6	27
1932	15	-	-	-	1	-	4	-	-	-	-	-	-	2	-	8	30
1933	30	-	-	-	1	-	6	-	-	-	-	-	-	2	-	3	42
1934	40	-	-	-	5	-	5	-	-	-	-	-	3	2	-	11	66
1935	42	-	-	-	9	-	11	-	-	-	-	-	6	3	-	8	79
1936	45	-	-	-	9	-	6	-	-	-	-	-	-	1	1	5	67
1937	62	-	-	-	7	-	6	-	-	-	-	-	10	1	1	11	98
1938	59	-	-	-	10	-	6	-	-	-	-	5	6	-	-	11	97
1939	96	-	-	-	8	-	10	-	-	-	-	4	11	1	-	22	152
1940	105	-	-	-	5	-	7	-	-	-	-	6	5	1	-	10	139
1941	87	-	-	-	15	-	10	-	-	-	-	5	8	1	-	6	132
1942	101	-	17	-	12	-	11	-	-	-	-	5	1	1	-	17	165
1943	108	1	26	-	16	-	6	-	-	-	-	7	7	-	-	23	194
1944	87	-	31	-	8	-	2	-	-	-	-	4	4	1	-	26	163
1945	76	-	17	-	8	-	3	-	-	-	-	6	2	1	-	90	203
1946	11	-	0	-	13	-	11	-	-	-	-	8	8	-	-	26	77
1947	75	-	14	-	7	-	16	-	-	-	-	19	10	4	-	27	172
1948	108	-	47	-	12	-	20	-	-	-	-	18	20	2	-	2	229
1949	265	-	59	16	27	-	31	-	-	-	-	18	35	1	-	10	462
1950	588	-	210	25	16	24	45	-	-	-	-	20	51	7	-	21	1,007
1951	573	-	247	28	40	26	56	-	-	-	-	17	63	4	1	36	1,091
1952	370	-	235	55	38	26	42	-	-	-	-	19	52	1	-	26	864
1953	334	-	205	66	40	34	82	-	-	-	-	25	41	1	5	24	857
1954	272	-	188	86	46	19	102	-	-	-	-	23	41	2	4	63	846
1955	244	-	178	107	57	34	90	-	-	-	-	20	34	4	2	21	791
1956	266	124	243	100	58	34	86	-	-	-	-	23	47	6	4	54	1,045
1957	282	91	224	108	48	47	84	-	-	-	-	22	48	4	3	55	1,016
1958	327	122	291	148	56	53	109	-	-	-	-	19	48	3	6	84	1,266
1959	336	109	309	137	64	72	97	-	-	-	-	24	58	11	1	77	1,295
1960	289	125	311	190	109	94	161	1	-	-	-	28	53	16	3	29	1,409
1961	260	81	263	147	61	99	135	6	-	-	-	31	69	33	2	25	1,212
1962	303	123	226	168	80	120	86	18	-	-	-	36	78	22	4	40	1,304
1963	452	164	312	157	54	138	228	27	-	-	-	28	70	24	2	35	1,691
1964	452	177	329	125	70	180	196	22	-	-	-	43	76	28	4	47	1,749

Individual Donors*
By Giving Club

Giving Club	Level of Gift	1997-98	1998-99	1999-00	2000-01	2001-02
Gasson Society	\$10,000 +	331	381	505	589	626

By Primary School and Class, 2001-2002

Adv.

1924	1	-	-	-	-	-	-	-	-	-	-	-	-	-	-	-	-	1
1925	-	-	-	-	-	-	-	-	-	-	-	-	-	-	-	-	-	0
1926	-	-	-	-	-	-	-	-	-	-	-	-	-	-	-	-	-	0
1927	1	-	-	-	-	-	-	-	-	-	-	-	-	-	-	-	-	1
1928	3	-	-	-	-	-	-	-	-	-	-	-	-	-	-	-	-	3
1929	1	-	-	-	-	-	-	-	-	-	-	-	-	-	-	-	-	1
1930	4	-	-	-	-	-	-	-	-	-	-	-	-	-	-	-	-	4
1931	2	-	-	-	-	-	-	-	-	-	-	-	-	-	-	-	-	2
1932	5	-	-	-	-	-	-	-	-	-	-	-	-	-	-	-	1	6
1933	4	-	-	-	-	-	-	-	-	-	-	-	-	-	-	-	1	5
1934	12	-	-	-	1	-	-	-	-	-	-	-	-	-	-	-	3	16
1935	16	-	-	-	-	-	-	-	-	-	-	-	-	-	-	-	-	16
1936	16	-	-	-	-	-	-	-	-	-	-	-	-	-	-	-	-	16
1937	17	-	-	-	1	-	1	-	-	-	-	-	2	-	-	-	4	25
1938	19	-	-	-	-	-	-	-	-	-	-	1	1	-	-	-	1	22
1939	41	-	-	-	1	-	1	-	-	-	-	1	4	-	-	-	5	53
1940	44	-	-	-	-	-	1	-	-	-	-	2	3	-	-	-	4	54
1941	32	-	-	-	1	-	2	-	-	-	-	1	3	-	-	-	1	40
1942	36	-	6	-	3	-	-	-	-	-	-	1	1	-	-	-	3	50
1943	40	1	14	-	1	-	1	-	-	-	-	2	2	-	-	-	7	68
1944	35	-	15	-	1	-	-	-	-	-	-	1	-	-	-	-	7	59
1945	41	-	4	-	-	-	-	-	-	-	-	-	-	-	-	-	13	58
1946	2	-	-	-	-	-	3	-	-	-	-	2	1	-	-	-	4	12
1947	16	-	4	-	2	-	3	-	-	-	-	4	4	-	-	-	8	41
1948	40	-	16	-	4	-	1	-	-	-	-	4	5	-	-	-	-	70
1949	94	-	21	-	-1	-	-	-	-	-	-	-	-	-	-	-	-	-
94	1	-	-	4	12	-	-	-	-	-	-	-	-	-	-	-	-	-
1947	1-94	1	481	-	-	-	-	-	-	-	-	-	-	-	-	-	-	-
56	-	-	-	-	-	-	-	-	-	-	-	-	-	-	-	-	-	-

-[(1947)-2556.7(1)-26.7(6)-306.7(1)-3877(-)-3817(7(-)-179.7,7(9)-26.7(4)-3006.7(1)-3mS1(-)-3069.18-7-2688t7n(6)-30

PHOTO

Alumni House	885 Centre Street	Administrative	1974	15,638
Alumni Stadium	2604 Beacon Street	Sports	1957	464,347
Bapst Library	Middle Campus	Library	1928	69,623
Barat House	885 Centre Street	Jesuit Residence & Administrative	1974	25,392
Bea House ²	176 Commonwealth Avenue	Jesuit Residence	1965	4,685
Botolph House	18 Old Colony Road	Administrative	1967	7,136
Bourneuf House	84 College Road	Administrative	1985	4,460
Thea Bowman AHANA Center	72 College Road	Administrative	1970	3,528
Brock House	78 College Road	Administrative	1972	4,146
Campion Hall	Middle Campus	Academic & Administrative	1955	112,491
Canisius House ²	67 Lee Road	Jesuit Residence	1966	3,761
Carney Hall	Middle Campus	Academic & Administrative	1962	101,059
Cheverus Hall	127 Hammond Street	Student Residence	1960	32,102
Claver Hall	40 Tudor Road	Student Residence	1955	12,980
Connolly Carriage House	300 Hammond Street	Academic	1975	

Buildings Related to Boston College Operations Location and Primary Use, Spring 2002 (Continued)

Name	Location	Primary Use	Date Constructed or Acquired	Gross Square Footage
Merkert Trailer	Middle Campus	Academic	1998	3,008
Mill Street Cottage	29 Mill Street	Residence	1974	2,879
Modular Apartments	Lower Campus	Student Residence	1970	104,100
Murray House	292 Hammond Street	Commuter Center	1967	8,490
Murray Carriage House	292 Hammond Street	Academic	1967	2,618
O'Connell House	185 Hammond Street	Student Union	1938	32,007
Thomas P. O'Neill, Jr. Library	Middle Campus	Central Research Library	1984	206,910
Parking Garage	2599 Beacon Street	General Parking Facility	1979	302,023
Parking Garage (New)	40 St. Thomas More Road	General Parking Facility	1994	328,972
Quonset Hut	885 Centre Street	Gymnasium	1974	5,964
Rahner House	96 College Road	Administrative	1952	2,799
Ricci House	30 Quincy Road	Jesuit Residence	1999	4,534
Roberts House & Garage ³	246 Beacon Street	Jesuit Residence	1989	8,583
Robsham Theater Arts Center	50 St Thomas More Road	Student Services & Academic	1981	31,614
Roncalli Hall	200 Hammond Street	Student Residence	1965	40,674
Rubenstein Hall	90 Commonwealth Avenue	Student Residence	1973	123,739
Service Building	Middle Campus	Academic & Administrative	1948	33,718
Shaw House	372 Beacon Street	Student Residence	1962	9,494
Commander Shea Field	2605 Beacon Street	Baseball/Soccer Field	1960	
Southwell Hall	38 Commonwealth Avenue	Administrative	1937	12,338
St. Ignatius Maintenance Building	Middle Campus	Administrative	1993	2,372
St. Mary's Hall ²	Middle Campus	Jesuit Residence	1917	135,721
St. Thomas More Hall	2150 Commonwealth Avenue	Administrative	1955	64,584
Stuart House & the James W. Smith Wing	885 Centre Street	Academic & Administrative	1974	104,884
Trinity Chapel (Newton)	885 Centre Street	Chapel	1974	20,578
Vanderslice Hall	70 St. Thomas More Road	Student Residence	1993	119,492
Vouté Hall	110 Commonwealth Avenue	Student Residence	1988	87,189
Michael P. Walsh Hall	150 St. Thomas More Road	Student Residence & Dining Facility	1980	205,805
Waul House	256 Hammond Street	Administrative	2000	16,407
Welch Hall	182 Hammond Street	Student Residence	1965	40,724
Weston Observatory	Weston, MA	Research & Administrative	1948	22,182
Williams Hall	144 Hammond Street	Student Residence	1965	40,738
Xavier Hall	44 Tudor Road	Student Residence	1955	12,938
	142 Beacon Street	Administrative	1997	3,446
	194 Beacon Street	Academic	1996	5,628
	350 Beacon Street	Residence	2001	3,329
	2 Boston Road Property	TBD	2000	16,591
	11 Chestnut Hill Road	Residence	2000	5,334
	36 College Road	Administrative	1974	3,766
	50 College Road	Administrative	1996	4,303
	66 Commonwealth Avenue	Student Residence & Administrative	1989	58,779
	25 Lawrence Avenue	Administrative	1993	4,722
	31 Lawrence Avenue	Academic	1979	5,105
	31 Lawrence Avenue Garage	Administrative	1996	1,985
	55 Lee Road	Administrative	1978	7,363
	66 Lee Road	Residence	1999	2,510
	14 Mayflower Road	Administrative	1998	5,245
	40 Old Colony Road	Residence	2001	6,400
	24 Quincy Road	Academic	1998	4,317
	22 Stone Avenue	Administrative	1999	4,632
	42 St. Stephens Green	Administrative	2000	6,610
	43 St. Stephens Green	Administrative	2000	6,473
	90 St. Thomas More Road	Student Residence	1993	110,487
Total Gross Square Footage⁴				5,858,370

Facility Capacities

Fall 2002

Facility & Location*	Lecture/Event Seating	Dinner Seating	Buffet Seating	Reception/ Standing
Athletics				
Alumni Stadium	44,500	-	-	-
Conte Forum	8,500/7,600**	-	-	-
Kelly Rink	-	1,100	700	2,000
Power Gymnasium	975	600	450	1,000
The Shea Room	250	160	140	300
Flynn Student Recreation Complex	2,809	-	-	4,000
Auditoriums				
Cushing Hall 001	160	-	-	-
Devlin Hall 008	297	-	-	-
Fulton Hall 518	205	-	-	-
Gasson Hall 305 (Fulton Debate)	102	-	-	-
Higgins 300	153	-	-	-
Higgins 310	80	-	-	-
McGuinn Hall 121	256	-	-	-
Merkert Chemistry Center 127	150	-	-	-
Robsham Theater Arts Center	591	-	-	-
Stuart Hall 315, Newton Campus	178	-	-	-
Stuart Hall 411, Newton Campus	100	-	-	-
New Academic Wing 120, Newton Campus	125	-	-	-
New Academic Wing 115a, Newton Campus***	150	-	-	-
New Academic Wing 115b, Newton Campus***	150	-	-	-
New Academic Wing 200, Newton Campus	96	-	-	-
New Academic Wing 400, Newton Campus	56	-	-	-
Dining Halls****				
Boston Room, Lower Campus Dining Facility	-	40	32	50
Eagle's Nest, McElroy Commons	-	450	350	-
Faculty Dining Room, McElroy Commons	-	150	125	175
Heights Room, Lower Campus Dining Facility	-	224	200	325
Main Dining Area, Lower Campus Dining Facility	-	803	803	803
McElroy Main Dining Hall, McElroy Commons	-	900	700	1,100
Newton Campus Cafeteria, Stuart House	-	286	200	-
Newton Room, Lower Campus Dining Facility	-	40	32	50
Stuart Snack Bar, Stuart House, Newton Campus	-	250	200	-
Welch Dining Hall, Lyons Hall	-	500	400	550
Houses				
Barat House, Newton Campus	50	64	64	90
Haley House, 314 Hammond Street	16	-	-	-
Hovey House Library, 258 Hammond Street	25	-	-	-
O'Connell House, 185 Hammond Street	-	250	200	-

(continued on following page)

Multi-Purpose

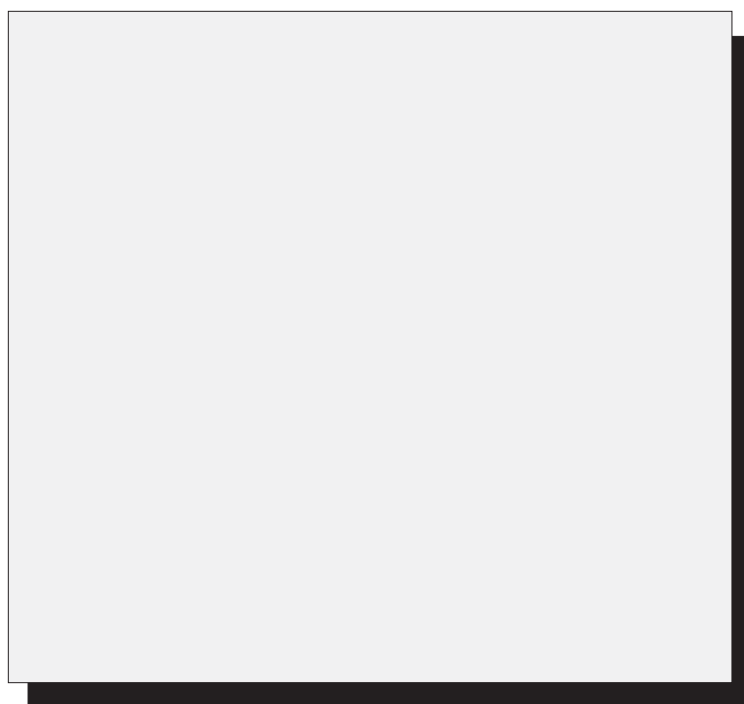
Cabaret Room, Vanderslice Hall	150	115	100	400
Kresge Room & Lobby, Robsham Theater Arts Center	-	-	-	150

Dining Facilities

Fall 2002

Name	Location	Capacity
Carney's (McElroy Dining Hall)	McElroy Commons	775
Eagle's Nest Snack Bar	McElroy Commons	446
Faculty Dining Room	McElroy Commons	146
Hillside Cafe	Lower Campus Admin. Building	150
Lower Campus Dining Facility	60 St. Thomas More Road	945
McElroy Cafe	McElroy Commons	91
Newton Campus Cafeteria	Stuart House	290
Newton Campus Snack Bar	Stuart House	250
Welch Dining Hall	Lyons Hall	550
Total Dining Hall Seating		3,643
Boston Room	60 St. Thomas More Road	40
Heights Room	60 St. Thomas More Road	250
Newton Room	60 St. Thomas More Road	40
Walsh Function Room	Walsh Hall	150
Total Function Room Seating		480
Total Capacity		4,123

Source: Dining Service

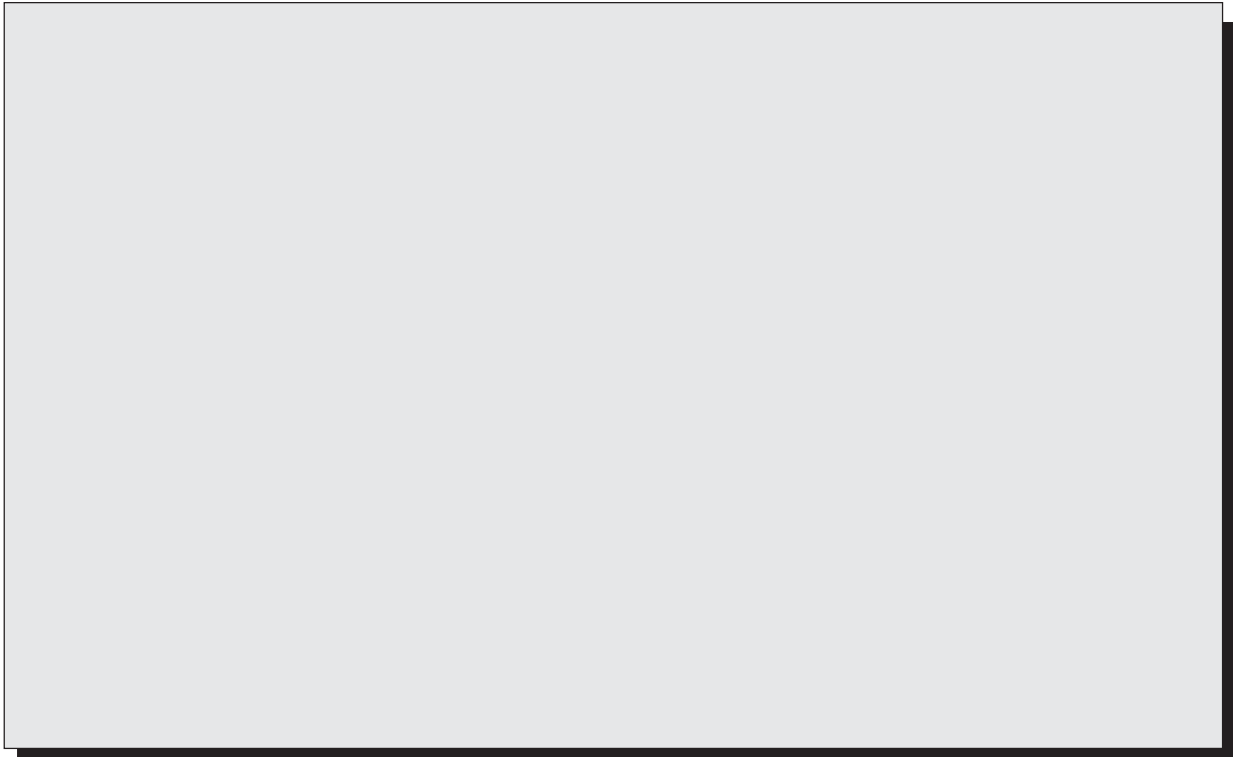


Residence Hall Capacities Fall 2002

Residence Hall	Address	Living Units	Students	Staff*	Total
Chestnut Hill Campus					
Upper Campus					
Cheverus Hall	127 Hammond Street	65	132	3	135
Claver Hall					

FINANCE

PHOTO

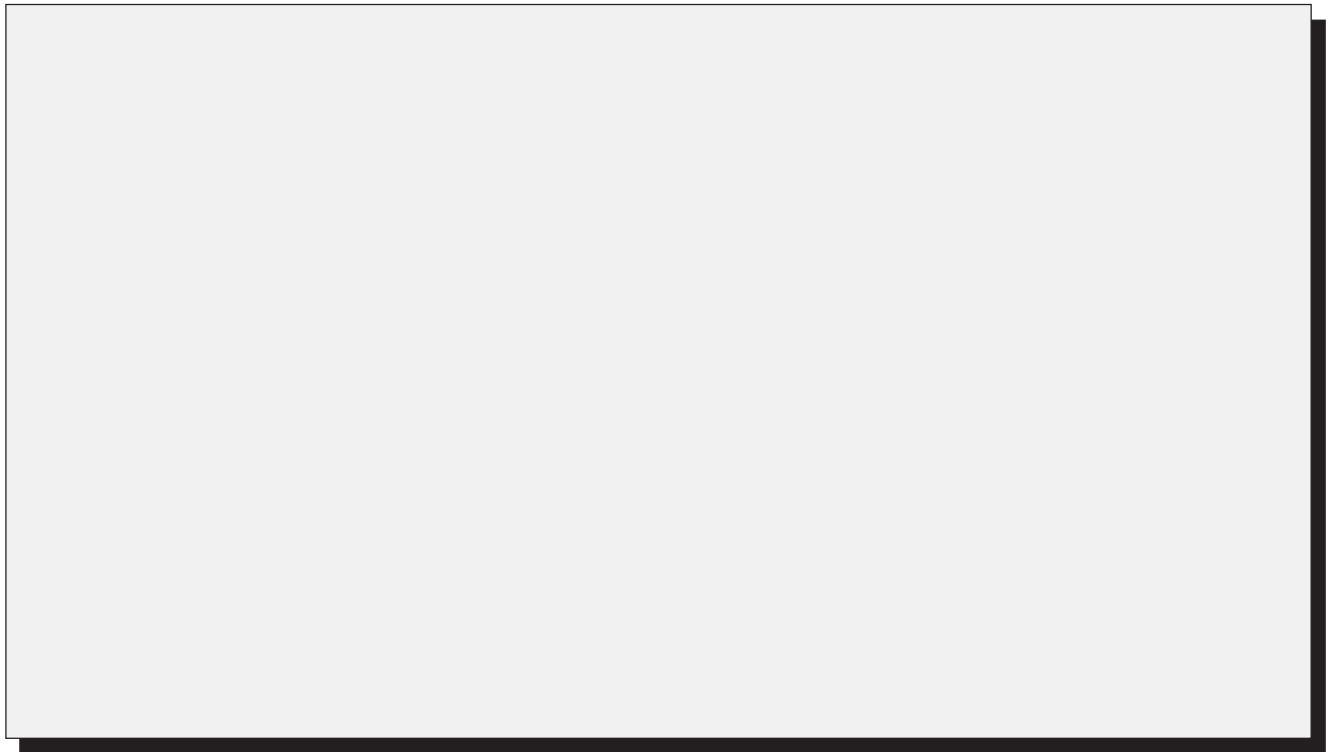


Tuition and Fees
For the Ten Years Ending May 31, 2003

	1994	1995	1996	1997	1998	1999	2000	2001	2002	2003
Undergraduate Schools										
Arts & Sciences, Education, Management, Nursing	\$15,570	\$16,640	\$17,890	\$18,820	19,770	20,760	21,700	22,680	24,050	\$25,430

Boston College Undergraduate Tuition Restated in 1982-84 Dollars*
Effect of Inflation and Real Growth

Academic Year	Tuition in Absolute Dollars	Consumer Price Index**	Tuition in Constant 1982-84 Dollars
1989-90	\$11,720	126.1	\$9,294



ACADEMIC RESOURCES & TECHNOLOGY

PHOTO

Expenditures for Library Materials

Library	1997-98	1998-99	1999-00	2000-01	2001-02
O'Neill*	\$ 4,542,640	\$ 4,669,956	\$ 5,004,918	\$ 5,254,406	\$ 5,420,183
Educational Resource Center	61,442	66,876	66,014	68,968	68,338
Bapst	70,483	73,238	75,617	78,075	81,120
Social Work	88,838	89,977	92,053	95,144	98,493
John J. Burns	44,632	94,315	135,507	210,840	193,160
Law	855,487	912,927	934,204	997,441	1,016,247
Total	\$5,663,522	\$5,907,289	\$6,308,312	\$6,704,874	\$6,877,541

* Includes general expenditures recorded as "University Librarian."

Source: Office of the Controller

Library Services

Quest: The Library Information System

Quest, the Libraries' Web-based integrated system provides convenient access to the Libraries' collections, digital resources, and services from www.bc.edu/quest. It offers a variety of methods for finding books, periodicals, media resources, microforms, newspapers, and electronic materials.

QUEST can easily be searched from any Web browser regardless of platform or location, 24 hours a day, seven days a week. Users can interact with the system and receive immediate feedback on the status of requests; they can place a hold, recall, or request rush processing for a new book right from their desktop. Users can also initiate and track requests for document delivery and interlibrary loan transactions, and may renew materials that are currently charged to them. The Web interface and expanded cataloging capabilities allow unprecedented access to thousands of Web accessible scholarly resources, to full text journals, and to digital collections of photographs and other material.

Digital Resources

The Boston College Libraries offer access to hundreds of electronic indexes and databases. A growing number of these databases include full text access to thousands of books and journals directly from the researcher's desktop. A complete listing of all online databases available through the Libraries can be found by selecting Online Databases on the Libraries' home page: www.bc.edu/libraries.html. The list includes groupings by subject and an alphabetical listing by title. Databases range in coverage from very general to very specific and cover a wide range of research areas in humanities, social sciences, sciences, health sciences, business law, and public affairs. Most databases can be reached directly

John J. Burns Library of Rare Books and Special Collections

The University's special collections, including the University's Archives, are housed in the magnificently appointed Honorable John J. Burns Library, located in the Bapst Library Building, north entrance. These distinguished and varied collections speak eloquently of the University's commitment to the preservation and dissemination of human knowledge. The Burns Library is home to more than 150,000 volumes, some 15,000,000 manuscripts, and important collections of architectural records, maps, art works, photographs, films, prints, artifacts, and ephemera. These materials are housed in the climate-controlled, secure environment of Burns either because of their rarity or because of their importance as part of a special collection. While treated with special care, these resources are available for use at Burns to all qualified students, faculty, and researchers. Indeed, their use is strongly encouraged, and visitors to Burns are always welcome, either simply to browse or to make use of the collections.

Though its collections cover virtually the entire spectrum of human knowledge, the Burns Library has achieved international recognition in several specific areas of research, most notably: Irish studies; British Catholic authors; Jesuitana; Fine print; Catholic liturgy and life in America, 1925-1975; Boston history; the Caribbean, especially Jamaica; Balkan studies; Nursing; and Congressional archives. It has also won acclaim for significant holdings on American detective fiction, Thomas Merton, Japanese prints, Colonial and early Republic Protestantism, and banking.

Some of the significant collections at Burns include:

- ◆ Joseph A. Grace's Early Modern English Authors Collection
- ◆ Graham Greene Library and Archive
- ◆ Bobby Hanvey Photographic Negative Archive on Northern Ireland
- ◆ Seamus Heaney Collection
- ◆ The Honorable Margaret Heckler Papers
- ◆ Irish Collection: Books, Manuscripts, Paintings, Sculpture, Photographs, Maps and Ephemera
- ◆ Irish Music Center- including the Frederick Manning Collection of John McCormack
- ◆ Jane Jacobs Collection
- ◆ Janet Wilson James Collection on Women's History
- ◆ Elizabeth Jennings Collection
- ◆ Jesuitana Collection, 1540-1773; 1814 - present
- ◆ David Jones Collection
- ◆ Rita Kelleher Collection on Nursing
- ◆ Brian and June Leeming Collection of Irish Literature
- ◆
- ◆ The Aylesford Press Collection
- ◆ Banking Archives: Hibernia Savings Bank, Union Warren, The Provident Institution for Savings, the Yankee Bank for Finance and Savings, and the Savings Banks Association of Massachusetts
- ◆ Samuel Beckett Collection
- ◆ Hilaire Belloc Collection and Archives, 1870-1953
- ◆ The Honorable Edward Boland Papers
- ◆ Bookbuilders of Boston Archives, 1938-
- ◆ British Catholic Authors
- ◆ Bruce F. Browning Boston Theater Collection
- ◆ Burns, Oates, and Washbourne Collection, 1847-1954
- ◆ The Wallace P. Carroll Papers
- ◆ The Charitable Irish of Boston Collection
- ◆ Gilbert Keith Chesterton Collection, 1874-1936
- ◆ Citywide Coordinating Council Archives, 1975-1978
- ◆ Gerald Chartres Dawe Collection
- ◆ John F. Deane Collection
- ◆ Josephine A. Dolan Collection
- ◆ Theodore Dreiser Collection
- ◆ The Reverend Robert F. Drinan, S.J. Papers
- ◆ East European Collection (Bulgarian and Romanian)
- ◆ Eire Society of Boston Archives
- ◆ Fine Print Collection
- ◆ Flann O'Brien Papers
- ◆ Eric Gill Collection
- ◆ Howard B. Gill Papers

**Student Learning and
Support Center Statistics**

Computer Network Elements

	1997-98	1999-00	2000-01	2001-02
Computer Networking "Actives"				
Number of remote campuses supported for data	4	5	6	6
Total number of registered TCP/IP nodes	11,772	11,844	13,000	13,125
Number of servers running at 100 megabytes per second	52	93	150	200
Number of "Switched" 10/100 ethernet ports	1,032	11,300	12,000	16,950
Number of "Shared" 10 megabyte ethernet ports	13,153	6,900	6,200	1,250
Number of "Building to Backbone" links at 10 megabytes per second	95	50	15	0
Number of "Building to Backbone" links at 100 megabytes per second	2	51	13	10
Number of "Building to Backbone" links at 1000 megabytes per second	1	1	26	88
Total bandwidth of Internet I link (in megabytes per second)	4.5	45	45	45
Total Bandwidth of Internet II	n/a	n/a	155M	155M
Total bandwidth of campus backbone	200M	200M	2 Gigabit	Multi-gigabit
Teleconferencing locations	7	10	10	10
Computer Network Infrastructure				
Investment in infrastructure (cumulative)				
Voice, data, video, active electronics & equipment	\$30,000,000	\$30,925,000	\$32,000,000	\$35,200,000
Cable plant, racks, patch panels, frames, etc.	\$10,000,000	\$10,250,000	\$10,450,000	\$11,495,000
Network Plant				
Total number of network rooms supported	380	390	397	405
Total number of information outlets supported	80,000	81,000	81,650	83,000
Interior fiber optic cable installed (in miles)	6	7	7.5	8.5
Exterior fiber optic cable installed (in miles)	12	14	16	18
Interior station cabling installed (in miles)	250	280	300	400
Exterior copper cabling installed (in miles)	40	41	43	44
Cable Television Plant				
CATV Headend Rooms	1	1	1	1
CATV Satellite Distribution Center	1	1	1	1
CATV drops - active	7,500	7,723	7,723	7,983

Source: Information Technology

Total Successful Page Deliveries by WWW.BC.EDU Web Server by Month

	1995-96	1996-97	1997-98	1998-99	1999-00	2000-01	2001-02
--	---------	---------	---------	---------	---------	---------	---------

J

PHOTO

Highlights of Sponsored Activities, 2001-2002

Summary of Sponsored Project Awards, 2001-2002

	Number of Awards	Award Total	Number of Awards	Award Total
School of Education	23	2,842,716		
Campus School	8	2,556,934		
CSTEOP	12	1,478,245		
TIMSS	16	3,871,354		
Law School	7	170,856		
School of Management	7	549,640		
School of Nursing	16	1,280,714		
Graduate School of Social Work	13	667,655		
Center for Corporate Citizenship	3	839,350		
Center for Child, Family & Community Partnerships	12	640,702		
Center for Religion & American Public Life	3	152,559		
Center for Work and Family	1	33,500		
Irish Institute	3	818,232		
Learning to Learn	2	223,778		
Social Welfare Research Institute	1	444,585		
Other	1	99,278		
TOTAL	282	\$ 39,642,198		

*Includes Weston Observatory.

Source: Office of Sponsored Programs

Sponsored Projects*

Source and Application of Funding (Thousands of Dollars)

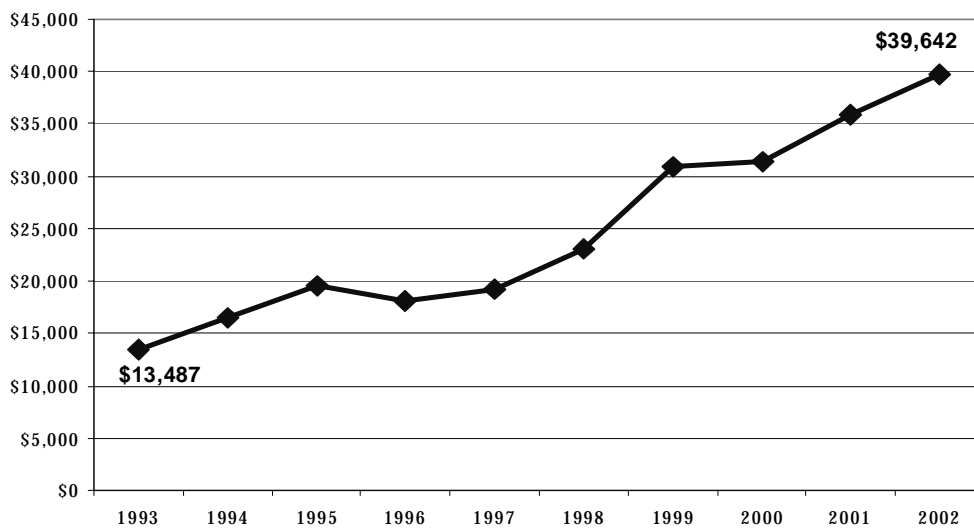
	1998	1999	2000	2001	2002
Source					
Government:					
Federal	\$ 20,182	\$ 22,760	\$ 25,449	\$ 28,677	\$ 31,513
State	1,415	1,326	1,908	1,858	2,060
Local	1,913	2,005	3,118	2,741	2,333
Corporations & Foundations	2,603	4,592	5,895	6,184	7,144
Total	\$26,113	\$30,683	\$36,370	\$39,460	\$43,050
Application					
Sponsored Research	\$ 14,608	\$ 18,700	\$ 22,860	\$ 23,796	\$26,296
Other Sponsored Programs	4,961	5,112	6,240	8,234	8,675
Student Aid	6,544	6,871	7,270	7,430	8,079
Total	\$26,113	\$30,683	\$36,370	\$39,460	\$43,050

* The amounts represent actual accounted expenditures (including Pell Grants) for the referenced fiscal year.

Source: Office of the Controller

Sponsored Project Awards Received
Fiscal Year 1992-1993 through 2001-2002 (Dollars in Thousands)

Growth in Sponsored Project Awards Received
Fiscal Year 1992-1993 through 2001-2002
(Dollars in Thousands)



Note: Student aid funds managed by the Financial Aid Office are *not* included in this chart.

The dollar amount of Sponsored Project Awards at Boston College increased by 194% between 1993 and 2002.

Selected Sponsored Project Awards

Center for Retirement Research

The Center for Retirement Research at Boston College was established through a 5-year \$5.25 million grant from the Social Security Administration in 1998. The goals of the Center are to promote research on retirement issues, to transmit new findings to the policy community and the public, to help train new scholars, and to broaden access to valuable data sources. The Center is the headquarters for researchers and experts in affiliated institutions including MIT, Syracuse University, the Brookings Institution, the Urban Institute, and the National Academy of Social Insurance. The Center is structured around a research team of interdisciplinary backgrounds in actuarial science, demography, economics, economic history, finance, political science, sociology and social work, and possesses a breadth of knowledge on retirement issues and institutions virtually unmatched in the field. As the nation confronts the myriad issues surrounding how best to ensure adequate retirement income for an aging population, the Center's researchers and experts explore possible policy changes related to Social Security, private pensions, and other sources of retirement income.

Web site: <http://www.bc.edu/crr>

Center for the Study of Testing, Evaluation, and Educational Policy (CSTEED)

CSTEED is an educational research organization located in the Lynch School of Education. Since its inception in 1980, CSTEED has conducted international comparative research on educational achievement and testing, evaluation and public policy studies to improve school assessment practices. CSTEED researchers work on both small and large scales - individual schools, districts, and states - to advance educational testing practices and policies and to improve the quality and fairness of education. The Scanning Services Center (SSC) at CSTEED serves the needs of the Boston College community. It provides scanning services for departments and individuals, including scanning for course evaluations, course tests, and research surveys. CSTEED also administers national examinations, specifically the Miller Analogies Test (MAT), Potions, and Specialized Examinations.

ATHLETICS

PHOTO

Intercollegiate Athletic Season Highlights 2001-2002

BASEBALL

Head Coach: Pete Hughes

Record: 30-25 (15-11 BIG EAST)

With a very experienced nucleus of veterans and 16 talented freshmen, head coach Pete Hughes and the Eagles overcame several injuries to remain near the top of the BIG EAST standings the entire season. The Eagles' weekend pitching rotation - Mark Sullivan, Chris Lambert, and Kevin Shepard - combined for a 24 - 9 record. Besides qualifying for the BIG EAST Tournament, two team highlights include the Eagles sweeping then No. 21 Rutgers and defeating NCAA Tournament qualifier Florida International in a single game. Post season honors for the team included Hughes being named BIG EAST Coach of the Year, which was the second time he has earned the honor in four years. Lambert became the first player in BIG EAST history to be named Rookie and Pitcher of the Year in the same year. Jeff Mackor, Neal McCarthy, Lambert, and Brian Durkin were all named first-team ALL-BIG EAST, while Macchi and Locke earned third-team distinctions.

BASKETBALL

Head Coach, Men's: Al Skinner

Head Coach, Women's: Cathy Inglese

Men's: Record: 20-12 (8-8 BIG EAST)

Boston College finished with a 20-12 record and earned its second consecutive berth in the NCAA Tournament. Coming on the heels of the previous winter's 27th-win campaign, the Eagles posted their first back-to-back 20 win seasons since 1981-82 and 1982-83. The program also registered 47 victories in the last two years, equaling the school's record for victories in a two-season span. Troy Bell gained ALL-BIG EAST first team honors for the second consecutive season, while Ryan Sidney made his mark in the rebounding department. Sidney was the nation's top rebounder among Division I players who stood 6-2 or shorter. The program capitalized on its recent success, making numerous regional and national television appearances, including six on ESPN, four on CBS, one on ABC and one on CNN/SI.

Women's: Record: 23-8 (12-4 BIG EAST)

The Eagles put forth one of the most successful seasons in recent history with their 23-8 overall mark. Compiling the second-highest win total in program history, the Eagles qualified for their third NCAA Tournament in the last four years and were the fifth seed in the Midwest Regional, also tying the program-high for post-season seeding. In BIG EAST action, BC went 12-4 during the regular season and was seeded as the #3 team heading into the conference tournament. The Eagles advanced to the championship game. For a majority of the season, the Eagles were ranked in the Top 25 of both the Associated Press and the USA Today/WBCA/ESPN Coaches polls. During a week span in February, they found themselves ranked 16th, giving them the highest-ever national ranking. At season's end, senior Nicole Conway was named the Aeropostale BIG EAST Scholar-Athlete. Brianne Stepherson was an ALL-BIG EAST second team selection while Clare Droesch was a BIG EAST All-Rookie choice. Conway and Rachel Byars were Verizon Academic All-District selections, while Stepherson was a district Kodak All-American.

CROSSCOUNTRY

Men's:

Boston Invrogt5 Tw/(Rn ethethrivictrict Kodak)Tj0 -1951 TcOsocult athonor.544 Tw/(Cd to the chayGhTa Tfthrivict socult athonorI Twits second

BostoMeetthe Cd to the. Sni's en0(re Wolfinen6 Tw/(.1048 Tre therict Kodak)Tj0 -0111 TD0. majorifid comeet062 Twshe thempet weredepaopnkiol BByr2 TGundrn. haded ALL-BIG) JTJ0 -1.1

Women's:

Eathonorth in1425 Tg DQe Eagler[(adgotReboun[(hisalizn wbouen Coll(Wo35.00378.0050 -1.14 TD0.08703 Tc0athonorTw[(eveache.1o-[crica11 TD rankTsSteph1516 Tth inCrociighst win) JTJ0 -1.1

also helped the Eagles on the links throughout the year.

Women's: The Eagles finished in the top 10 of all but one match they participated in this year. In the fall, BC earned four finishes of ninth or higher and finished as high as fifth place (Mount Holyoke Invitational). In the spring, they continued their team success with a second place finish at the Lady Eagle Invitational, as well as three other top 15 finishes. Six different golfers led the Eagles at least one time and were paced by sophomore Channing Lovejoy (three times) who had a season-best eighth place at the Hartford Invitational.

ICE HOCKEY

Head Coach, Men's: Jerry York

Head Coach, Women's: Tom Babson

Men's:

Record 18-18-2 (10-13-1 HOCKEY EAST)

The team concluded the season with an 18-18-2 mark after struggling with injuries all season. Senior captains Jeff Giuliano and Ales Dolinar led a team that had 16 freshmen and sophomores compared to just six combined juniors and seniors. During the season, the team had streaky success that included key wins over Boston University, Maine, Northeastern and Wisconsin. BC also won the Silverado Shootout, the holiday tournament in Duluth, Minn., with a pair of 5-1 wins over Miami (Ohio) and host Minnesota-Duluth. Offensively, the Eagles were led by sophomores Tony Voce, who ranked among the nation's leaders in six categories and Ben Eaves, who missed almost a third of the season with a rib injury. Eaves was a second team All-American at season's end. Voce was a first team ALL-HOCKEY EAST selection, while Eaves was a second team honoree. Freshman Dave Spina was voted to the league's All-Rookie Team.

Women's:

Record 9-19-4 (5-12-3 ECAC East)

The team finished the season with a 9-19-4 record. Its eight wins over Division I opponents were the most in school history. Included in those victories were first-ever NCAA wins over Cornell (14 games) and Providence (16 games). Senior Kelly McManus led the team in scoring with 17 goals and 17 assists for 34 points, earning ECAC Player of the Week honors twice and USCHO National Offensive Player of the Week recognition once. Freshman goaltender Lisa Davis played in 30 of the team's 32 games and set school records for goals against average (2.59), save percentage (.918) and shutouts in a season (four). Davis was named the ECAC Eastern League's Rookie of the Week three times and earned USCHO National Defensive Player of the Week honors for the last week of the regular season.

INDOOR TRACK

Head Coach, Men's and Women's: Tom Babson

Men's:

Record 12-10-1 (6-7-1 BIG EAST)

The team finished the season with a 12-10-1 record. Its eight wins over Division I opponents were the most in school history. Included in those victories were first-ever NCAA wins over Cornell (14 games) and Providence (16 games). Senior Kelly McManus led the team in scoring with 17 goals and 17 assists for 34 points, earning ECAC Player of the Week honors twice and USCHO National Offensive Player of the Week recognition once. Freshman goaltender Lisa Davis played in 30 of the team's 32 games and set school records for goals against average (2.59), save percentage (.918) and shutouts in a season (four). Davis was named the ECAC Eastern League's Rookie of the Week three times and earned USCHO National Defensive Player of the Week honors for the last week of the regular season.

Record 12-10-1 (6-7-1 BIG EAST)

Women's:

Record 12-10-1 (6-7-1 BIG EAST)

The team finished the season with a 12-10-1 record. Its eight wins over Division I opponents were the most in school history. Included in those victories were first-ever NCAA wins over Cornell (14 games) and Providence (16 games). Senior Kelly McManus led the team in scoring with 17 goals and 17 assists for 34 points, earning ECAC Player of the Week honors twice and USCHO National Offensive Player of the Week recognition once. Freshman goaltender Lisa Davis played in 30 of the team's 32 games and set school records for goals against average (2.59), save percentage (.918) and shutouts in a season (four). Davis was named the ECAC Eastern League's Rookie of the Week three times and earned USCHO National Defensive Player of the Week honors for the last week of the regular season.

GENERAL INFORMATION

PHOTO

Honorary Degrees Awarded by Boston College 1955-2002

1955

Fred J. Driscoll, LL.D.
Christian A. Herter, LL.D.
Edward A. Hogan, Jr., LL.D.*
Rear Adm. Bartholomew W. Hogan, Sc.D.
John B. Hynes, LL.D.
His Beatitude Maximus IV, LL.D.
(August 23, 1955)
Valerian Cardinal Gracias, LL.D.
Russel Kirk, Litt.D.
Edward A. Sullivan, LL.D.

1956

Bartholomew A. Brickley, LL.D.
Peter J. W. Debye, Sc.D.
Most Rev. Frederick A. Donaghy, LL.D.
John F. Kennedy, LL.D.*
John W. King, LL.D.
Charles Munch, D. Mus.
Edward F. Williams, LL.D.

1957

Wallace E. Carroll, LL.D.
Arthur J. Kelly, LL.D.
Augustus C. Long, LL.D.*
Adrian O'Keefe, LL.D.
Very Rev. Msgr. Patrick W. Skehan, LL.D.
Nils Y. Wessell, LL.D.

1958

Most Rev. Amleto G. Cicognani, LL.D.
(April 21, 1958)
Carl J. Gilbert, LL.D.
Paul Horgan, Litt.D.
Barnaby C. Keeney, LL.D.*
Henry M. Leen, LL.D.
Jacques Maritain, LL.D.
Raissa Maritain, LL.D.
Harold Marston Morse, D.Sc.
Rev. John B. Sheerin, C.S.P., LL.D.
Francis Cardinal Spellman, LL.D.
(December 8, 1958)

1959

His Excellency Sean T. O'Kelly, LL.D.
(March 22, 1959)
Ernest Henderson, LL.D.
Rev. John LaFarge, S.J., LL.D.
Henry Cabot Lodge, LL.D.
George Meany, LL.D.

Barbs300.08231000g; LL.D 1 Tf0.0003lacM 40424 T608.5 0 0 8.5 36

- 1977**
 Rev. Raymond Edward Brown, Litt.D.*
 Gerhard D. Bleicken, LL.D.
 Alice Bourneuf, D.Sc.
 James F. McDonough, M.D., D.Sc.
 Maria Tallchief Paschen, D.A.
 Michael Joseph Walsh, Litt.D.
- 1978**
 Bruno Bettelheim, Litt.D.
 Rev. Charles F. Donovan, S.J., L.H.D.
 Charles D. Ferris, LL.D.*
 Marvin E. Frankel, LL.D.
 John William McDevitt, LL.D.
 Leo Perlis, D.S.S.
- 1979**
 Dorothy Baker, D.S.S.
 Edward Patrick Boland, LL.D.
 George P. Donaldson, LL.D.
 Richard Ellmann, L.H.D.
 Robben W. Fleming, L.H.D.
 Walter F. Mondale, LL.D.*
 David S. Nelson, LL.D.*
- 1980**
 Germaine Bree, Litt.D.*
 Albert M. Folkard, L.H.D.
 Edward J. King, D.Pub. Admn.
 Joseph Cardinal Malula, LL.D.
 Thomas Aquinas Murphy, The Ignatius Medal
 (March 16, 1980)
 Bernard J. O'Keefe, D.E.Sc.
 Kevin H. White, LL.D.
- 1981**
 Thomas Cardinal Ó Fiaich, Litt.D.
 (October 23, 1981)
 Rev. Joseph Delphis Gauthier, S.J., L.H.D.
 Margaret M. Heckler, LL.D.
 Rose Fitzgerald Kennedy, L.H.D.
 Donald F. McHenry, LL.D.
 Thomas P. O'Neill, Jr., The Ignatius Medal*
 Joseph Harry Silverstein, D.A.
 Paul Donovan Sullivan, D.S.S.
- 1982**
 Rev. Robert I. Burns, S.J., L.H.D.
 George Bush, LL.D.*
 Robert A. Charpie, D.Sc.
 Dolores Hope, The Ignatius Medal
 (November 6, 1982)
 Josephine L. Taylor, D.Sc.Ed.
- 1983**
 Maya Angelou, L.H.D.
 Virginia A. Henderson, D.N.S.
 Joseph McKenney, D.Ed.
 Rev. Vincent T. O'Keefe, S.J., L.H.D.
 (March 13, 1983)
 Rev. Bruce J. Ritter, O.F.M., D.S.S.*
 An Wang, LL.D.
- 1984**
 Leon Higginbotham, LL.D.
 Richard Hill, D.B.A.
- Most Rev. Bernard F. Law, S.T.D.*
 Robert Merrifield, D.Sc.
 Muriel Sutherland Snowden, D.S.S.
 Otto Phillip Snowden, D.S.S.
- 1985**
 Rev. Frederick Joseph Adelmann, S.J., L.H.D.
 Lena Frances Edwards, D.Sc.
 Rev. J. Bryan Hehir, LL.D.
 Agnes Mongan, D.F.A.
 Anthony John Francis O'Reilly, D.B.A.
 (March 17, 1985)
 Andrew J. Young, LL.D.*
 Edward Zigler, L.H.D.
- 1986**
 Corazon C. Aquino, The Ignatius Medal
 (September 21, 1986)
 Guido Calabresi, LL.D.
 Jacques d'Amboise, D.F.A.
 Annie Dillard, L.H.D.
 Lionel B. Richie, Jr., D.Mus.
 Francis C. Rooney, Jr., D.B.A.
 Jamie Cardinal Sin, S.T.D.*
- 1987**
 Josephine A. Dolan, D.N.S.
 Garret FitzGerald, LL.D.
 Walter E. Massey, D.Sc.
 John G. McElwee, LL.D.
 Rev. Francis W. Sweeney, S.J., L.H.D.
 Vernon A. Walters, LL.D.*
- 1988**
 His Grace, Samuel E. Carter, S.J., S.T.D.*
 Esmé Valerie Eliot, Litt.D.
 Hans-Georg Gadamer, L.H.D.
 Robert Francis O'Malley, D.Sc.
 Richard Alan Smith, LL.D.
 Paul A. Volcker, LL.D.
- 1989**
 Thea Bowman, F.S.P.A., R.D.
 George E. Doty, The Ignatius Medal
 (April 6, 1989)
 Jonathan Kozol, D.S.S.*
 Thomas S. Murphy, LL.D.
 Kenneth Gilmore Ryder, D.Sc.Ed.
 Richard Francis Syron, LL.D.
 (March 18, 1989)
 Jerzy Turowicz, L.H.D.
- 1990**
 Edward A. Brennan, D.B.A.
 Thomas J. Brokaw, L.H.D.*
 Raymond G. Chambers, The Ignatius Medal
 (April 5, 1990)
 Franklyn G. Jenifer, LL.D.
 Rev. César A. Jerez, S.J., L.H.D.
 Eunice Kennedy Shriver, L.H.D.
 Robert M. Solow, LL.D.
- 1991**
 William Aramony, The Ignatius Medal
 (April 18, 1991)
- Raymond Edward Brown, S.S., The Ignatius Medal
 (July 25, 1991)
 John J. Curtin, Jr., LL.D.
 Rev. Timothy S. Healy, S.J., L.H.D.*
 Seamus J. Heaney, Litt.D.
 Rachel A. Robinson, D.Sc.Ed.
 John R. Smith, D.B.A.
- 1992**
 Barbara Bush, The Ignatius Medal
 (April 2, 1992)
 Mary Ann Glendon, LL.D.
 Roberto C. Goizueta, D.B.A.
 John E. Jacob, L.H.D.
 John J. Moakley, LL.D.
 Caroline C. Putnam, R.S.C.J., D.F.A.
 Warren B. Rudman, LL.D.*
- 1993**
 Jack Kemp, The Ignatius Medal
 (April 22, 1993)
 William J. Vouté, The Ignatius Medal
 (April 22, 1993)
 Queen Noor of Jordan, LL.D.*
 James F. Cleary, D.B.A.
 Elias J. Corey, D.Sc.
 Henry E. Hampton, L.H.D.
 Thérèse Higgins, C.S.J., L.H.D.
 Thomas H. O'Connor, L.H.D.
 John T. Williams, D.Mus.
- 1994**
 Daniel P. Tully, The Ignatius Medal
 (April 21, 1994)
 James P. Comer, LL.D.
 Louis V. Gerstner, Jr., D.B.A.
 Frances Hesselbein, L.H.D.
 Corinne Boggs Roberts, LL.D.*
 Donald J. White, L.H.D.
- 1995**
 Rita Dove, L.H.D.
 John Hume, LL.D.*
 Teddy Kollek, LL.D.
 Peter S. Lynch, LL.D.
 Cornelius Clarkson Vermeule, III, L.H.D.
- 1996**
 Lawrence A. Bossidy, The President's Medal
 for Excellence (April 18, 1996)
 T. Berry Brazelton, LL.D.
 William M. Bulger, LL.D.
 William H. Cosby, L.H.D.*
 Marian L. Heard, D. Pub. Adm.
 Michael J. Mansfield, The Speaker Thomas P.
 O'Neill, Jr. Award for Distinguished
 Citizenship
 J. Donald Monan, S.J., LL.D.
- 1997**
 John S. Chalsty, The President's Medal for
 Excellence (April 17, 1997)
 Peter Dervan, D.Sc.
 Roger Cardinal Etchegaray, LL.D.
 John A. McNeice, Jr., D.B.A.

Bernice Johnson Reagon, L.H.D.
Janet Reno, LL.D.*

1998

An Taoiseach Bertie Ahern, T.D., LL.D.*
Archibald Cox, The Speaker Thomas P. O'Neill, Jr. Award
for Distinguished Citizenship
Margaret A. Dwyer, LL.D.
John N. Hatsopoulos, D.B.A.
Catalina Montes, L.H.D.
James W. Skehan, S.J., D.Sc.
Frank G. Zarb, The President's Medal for Excellence
(April 16, 1998)

1999

Richard A. Grasso, The President's Medal for Excellence
(April 15, 1999)
Anna Faith Jones, L.H.D.
Alice E. McDermott, L.H.D.
Bill Richardson, LL.D.*
William F. Russell, L.H.D.
David Trimble, LL.D.

2000

Fayette M. Long, L.H.D.
Jaime Cardinal Ortega y Alamino, LL.D.
Richard W. Riley*
Kip Tiernan, L.H.D.
Sanford L. Weill, The President's Medal for Excellence
(April 13, 2000)
Robert C. Wright, LL.D.

2001

Francis B. Campanella, LL.D.
Thomas S. Durant, MD, L.H.D.
John J. Moakley, The Speaker Thomas P. O'Neill, Jr. Award
for Distinguished Citizenship
Clare S. Pratt, RSCJ, L.H.D.
Patrick E. Roche, D.B.A.
John F. Smith, Jr. The President's Medal for Excellence
(April 19, 2001)
Cherryl Thomas, D.Pub.Adm.
Tommy G. Thompson, LL.D.*

2002

R. Nicholas Burns, LL.D.*
Rev. Robert J. Bowers, L.H.D.
Charles Dolan, The President's Medal for Excellence
(April 18, 2002)
Sara Lawrence-Lightfoot, L.H.D.
Rev. John W. O'Malley, S.J., L.H.D.
Sister Marie Santry, S.N.D. de Namur, L.H.D.
Elisabeth Zweig Leoni, D.Pub.Adm.

* Commencement Speakers.
Source: President's Office

Types of Degrees Conferred at Boston College

Bachelor of Arts (A.B.)
Bachelor of Science (B.S.)
Master of Arts (M.A.)
Master of Arts in Teaching (M.A.T.)
Master of Business Administration (M.B.A.)
Master of Education (M.Ed.)
Master of Science (M.S.)
Master of Science in Teaching (M.S.T.)
Master of Social Work (M.S.W.)
Certificate of Advanced Educational Specialization (C.A.E.S.)
Certificate of Advanced Graduate Studies (C.A.G.S.)
Doctor of Philosophy (Ph.D.)
Doctor of Law (J.D.)

Honorary Degrees Granted by Boston College

D.A.	Doctor of Arts
D.B.A.	Doctor of Business Administration
D.C.S.	Doctor of Commercial Science
D.E.Sc.	Doctor of Engineering Science
D.F.A.	Doctor of Fine Arts
D.Journ.	Doctor of Journalism
D.Mus.	Doctor of Music
D.N.S.	Doctor of Nursing Science
D.Pub.Adm.	Doctor of Public Administration
D.Sc.	Doctor of Science
D.Sc.Ed.	Doctor of Science in Education
D.Sc.L.	Doctor of the Science of Law
D.Sc.T.	Doctor of the Science of Theology
D.S.S.	Doctor of Social Science
H.D.	Doctor of History
Hist.Phil.D.	Doctor of History in Philosophy
J.U.D.	Doctor of Civil and Canon Laws
LL.D.	Doctor of Laws
L.H.D.	Doctor of Humane Letters
Litt.D.	Doctor of Letters, Doctor of Literature
R.D.	Doctor of Religion
S.T.D.	Doctor of Sacred Theology
Sc.D.	Doctor of Science

Source: Commencement Programs, 1955 - present

Accrediting Agencies

AACSB International - Association to Advance Collegiate
Schools of Business
American Bar Association
American Chemical Society
American Psychological Association

Academic Department Locations

Accounting Department	Fulton 520
Advancing Studies, College of	McGuinn 100
Arts and Sciences, College of	Gasson 109A
Arts and Sciences, Graduate School of	McGuinn 221
Biology Department	Higgins 355
Business Law Department	Fulton 420
Chemistry Department	Merkert 125
Classical Studies Department	Carney 122
Communication Department	Lyons 215
Computer Science Department	Fulton 460
Counseling, Developmental Psychology, and Research Methods Department	Campion 309
Counseling Services	Gasson 108, Campion 301, Fulton 254
Economics Department	Carney 131
Educational Administration and Higher Education	Campion 205
Education, Lynch School of	Campion 103
English Department	Carney 446
Finance Department	Fulton 330
Fine Arts Department	Devlin 434
Geology and Geophysics Department	Devlin 213
Germanic Studies Department	Lyons 201
History Department	Carney 116
Honors Programs	
Arts and Sciences	Gasson 102
Education	Campion 104
Management	Fulton 226A
Language Laboratory	Lyons 313
Law School	Stuart Hall, Newton Campus
Management Center	Fulton 556
Management, Graduate Program	Fulton 320
Management, Undergraduate Program	Fulton 360
Marketing Department	Fulton 450
Mathematics Department	Carney 374
Music Department	Lyons 407
Nursing, Connell School of	Cushing 202
Operations and Strategic Management Department	Fulton 350
Organizational Studies Program	Fulton 430
Philosophy Department	Carney 251
Physics Department	Higgins 355
Political Science Department	McGuinn 201
Psychology Department	McGuinn 301
Religious Education and Pastoral Ministry, Institute of	31 Lawrence Avenue
Litns aurestm	

Academic Calendars

2002-2003

Fall Semester

August 26	Monday: Classes begin for 2nd and 3rd year law students
August 28	Wednesday: Classes begin for 1st year law students
September 2	Monday: Labor Day - No classes
September 3	Tuesday: Classes begin
September 4	

2003-2004

Fall Semester

August 25	Monday: Classes begin for 2nd and 3rd year law students
August 26	Tuesday: Classes begin for 1st year law students
September 1	Monday: Labor Day - No classes
September 2	Tuesday: Classes begin
October 13	Monday: Columbus Day - No classes
November 26 - 28	Wednesday - Friday: Thanksgiving Holidays
December 10 and 11	Wednesday and Thursday: Study days - No classes for undergraduate day students only
December 12 - 19	Friday - Friday: Term examinations

Spring Semester

January 5	Monday: Classes begin for all law students
January 19	Monday: Martin Luther King, Jr. Day - No Classes
January 20	Tuesday: Classes begin
March 1 - 5	Monday - Friday: Spring Vacation
April 8 - April 12	No Classes: Holy Thursday - Good Friday - Easter Monday (except classes beginning at 4:00 pm and later)
April 19	Monday: Patriots Day - No Classes
May 7 and 10	Friday to Monday: Study days - No classes for undergraduate day students only
May 11 - 18	Tuesday - Tuesday: Term examinations
May 24	Monday: Commencement
May 28	Friday: Law School Commencement

Source: Office of the Academic Vice President

Fact Book Index

- Academic Administration, 16
 Academic Calendars, 106
 Academic Department Locations, 105
 Academic Development Center, 79
 Academic Resources & Technologies, 76-81
 Academic Vice President Units, 18
 Accrediting Agencies, 104
 Administration & Faculty, 14-25
 Administrators, University, 20
 Administrative Staff, See Personnel
 Advancing Studies Enrollment, 31-33
 AHANA and International Student Enrollment, 32
 Alumni & Development, 50-57
 Alumni Association Board of Directors, 50
 Alumni Awards, 50
 Alumni by Primary School, Gender, and Class, 52-54
 Alumni Clubs, 50
 Alumni Donors by Primary School and Class, 56-57
 Alumni, Geographic Distribution, 51
 Applications, Acceptances, and Enrollment, Freshman, 28
 Applications, Acceptances, and Enrollment, Transfer Students, 30
 Archives, University, 79
 Art, McMullen Museum of, 80
 Association Memberships, 104
 Athletics, 94-97
- Board of Trustee Chairmen, 14
 Board of Trustee Membership, 14
 Boston College, A Brief History, 6
 Boston College, A Chronology, 7-9
 Boston College Profile, 11
 Boston College Properties, 62
 Building Use, Summary, 65
 Buildings and Grounds, See Physical Plant
 Buildings, Boston College, 60-61
 Burns Library, 78
- Campus Maps, 109-110
 Career Plans of Seniors, 47
 Chairmen, Board of Trustees, 14
 Chairpersons, Department, 16
 Charts of Administration, 17-19
 Classrooms, 65
 Compensation, Faculty, 25
 Computer Network Elements, 81
 Contracts and Grants, See Research & Sponsored Projects
 Cross Application Competitor Schools, 30
- Deans, Academic, See Academic Administration
 Degrees Conferred at Boston College, Types, 103
 Degrees Conferred, 40-44
 Department Chairpersons, 16
 Dining Facilities, 64
 Donors by Giving Club, 55
- Dormitories, See Residence Halls
- Educational Plans of Seniors, 47
 Enrollment, Advancing Studies, 31-33
 Enrollment, Full-Time Equivalent, 33
 Enrollment, Full-Time Freshman by Year and Gender, 28
 Enrollment, Graduate, by Degree Program and Discipline, 34
 Enrollment, Graduate, by School, Gender, and Full- and Part-Time, 31-32
 Enrollment, International Students, 32, 38-39
 Enrollment, Minority Students, See AHANA
- Enrollment, Summer Session, 34
 Enrollment, Transfer Students, 30
 Enrollment, Undergraduate by School, Gender, and Full- and Part-Time, 31-32
 Enrollment, Undergraduate Majors by School, 36
 Evening College, see Advancing Studies
 Executive Vice President Units, 19
- Facilities, See Physical Plant
 Facility Capacities, 63-64
 Faculty, Administration &, 14-25
 Faculty, Compensation by Rank, 25
 Faculty, by Highest Earned Degree and Gender, 23
 Faculty, by Highest Earned Degree and Rank, 23
 Faculty, by Rank and Gender, 24
 Faculty, by School and Gender, 22
 Faculty, by School and Rank, 22
 Faculty, by School and Tenure Status, 23
 Faculty, Full-Time Equivalent by School, 22
 Faculty, Full-Time, Teaching Fellows, Teaching Assistants by School and Department, 24
 Finance, 70-73
 Financial Aid, Undergraduate and Graduate, 45
 Financial Operations, Highlights, 70
 Financial Position Statement, Condensed, 71
 Foreign Students, See International Students
 Foreword, 2
 Founder of Boston College, 100
 Freshman Admission Profile, 28
 Freshman Applications, Acceptances, and Enrollment, 28
 Freshman, Full-Time, Enrollment by Year and Gender, 28
 Freshman, Geographic Distribution, 29
 Full-Time Equivalent Enrollment, 33
 Fund Raising, See Alumni & Development
- General Information, 100-110
 Geographic Distribution, Alumni, 51
 Geographic Distribution, Freshman, 29
 Geographic Distribution, Undergraduates, 35
 Geographic Distribution, Undergraduate and Graduate International Students, 39
 Gifts to the University, 55

Fact Book Index (Continued)

- Graduate Degrees Conferred, 40, 44, 103
 Graduate Enrollment by Degree Program and Discipline, 34
 Graduate Enrollment by Gender, 31-32
 Graduate Enrollment by School, 31-32
 Graduate Enrollment, Full- and Part-Time, 31-32
 Graduation and Retention Rates, 47
 Grants, See Research & Sponsored Projects
- History, Boston College, 6-9
 Honorary Degrees Awarded, 100-103
 Honorary Degrees, Types Granted, 103
- Information Technology, 77, 80-81
 Intercollegiate Athletic Season Highlights, 94-97
 Intercollegiate Sports Participation, 97
 International Student and Scholar Statistics, 32, 38-39
 Intramural Sports Participation, 97
- Jesuit Community at Boston College, 15
- Language Laboratory, 79
 Libraries, 76
 Library Expenditures, 76
 Library Holdings, 76
 Library Services, 77
 Library Special Collections, 78
 Library Use Statistics, 76
- Majors, Undergraduate, 36-37
 Maps, Campus, 109-110
 McMullen Museum of Art, 80
 Minority Student Enrollment, See AHANA
 Mission Statement, 2
- Network Elements, 81
- Officers of the University, 16
 Offices, 65
 Organization Chart, Administration, 17
 Organization Chart, Academic Vice President, 18
 Organization Chart, Executive Vice President, 19
- Personnel, Professional, Administrative, and Support Staff, 21
 Personnel, Restricted Funded, 21
 Physical Plant, 60-67
 Presidents of Boston College, 100
 Professional Staff, See Personnel
 Profile, Boston College, 11
 Properties, Boston College, 62
- Residence Hall Capacities, 66
- Restricted Funded Personnel, 21
- SAT, Average by Class, Freshman Enrollees, 28
Senior Survey, 47
 Sources of *Fact Book* Information, 106
 Special Collections, 78
 Sponsored Activities, Highlights, 84
 Sponsored Project Awards Summary, 84
 Sponsored Projects by Department, 85
 Sponsored Projects, Number and Dollar Amount Awards, 84
 Sponsored Projects, Proposals Submitted, 88
 Sponsored Projects, Selected Awards, 89
 Sponsored Projects, Source and Application, 84
 Sports Participation, Intercollegiate Statistics, 97
 Sports Records, Varsity, 97
 Student Credit Hours by School, 31
 Student Learning and Support Center, 80
 Students, 28-47
 Students Studying Abroad, 46
 Summer Session Enrollment, 34
 Support Staff, See Personnel
- Table of Contents, 3-5
 Teaching Fellows, Teaching Assistants, and Full-Time Faculty, 24
 Technology, 77, 80-81
 Telephone Infrastructure, 80
 Transfer Students, Applications, Acceptances, and